

This kit has been produced for your enjoyment by
Western WSW Gauge
4214 W. Beltline
Middleton, Wisc.
53562-3506

If you have any questions or comments please feel free to contact me. I will be happy to hear from you.

Directions for your Panel Side Gondola

The directions follow a sequence that I have found to work for me. You can deviate from them if you feel that it will work better for you.

Step 1.

Start with the two sides. You may wish to do them together as it will take less time. The rivets along the bottom of each side can easily be imprinted with a dress makers wheel. (Some runs of the kit have this step done.) After the car has been painted they appear to be rivets. Next cut the small square stock into lengths the same as the height of the sides, dont cut all the strips in as some will be needed for the ends, cut only what you need. These can be glued in place on the lines marked in the sides. Now cut the panel stock in 4 pieces 2'-6" long and 22 pieces 3'-0" long. The short ones are at each end and the long ones will fill in the other spaces. Using a pin in a Pin Vise prepunch holes for the grab irons as shown on the large drawing. Put on the grabs, a little dab of glue on each will hold them in place. Now set aside to dry while you are on the next step.

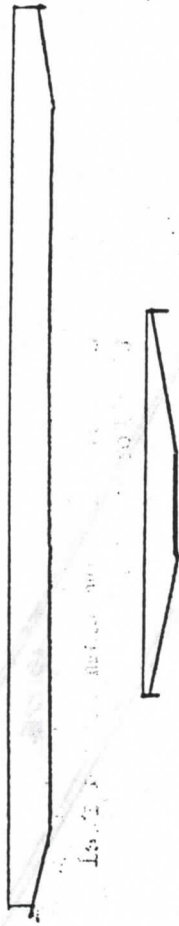
Step 2.

Ends. Cut 3 2" long square strips for end ribs and glue as shown. A variation of this are 4 to 5 vertical ribs, there should be enough stock for either variety. Install grabs as suggested in step one and glue on the polling pockets. Aluminum ones are provided although you may use a type that you have on your railroad for the "family" feel. Now you can set these aside untill later.

Step 3.

Underframe. The underframe is the easiest part of this project. Cut 2 bolsters from the shortest of the two large rectangular strips the width of the floor and glue in place 4'-6" from the ends. Take the long strip and cut to fit in between lengthwise and glue. Champher the ends as shown in the diagram below.

The bolsters are glued flat and the center sill to be glued on edge.



Step 4.

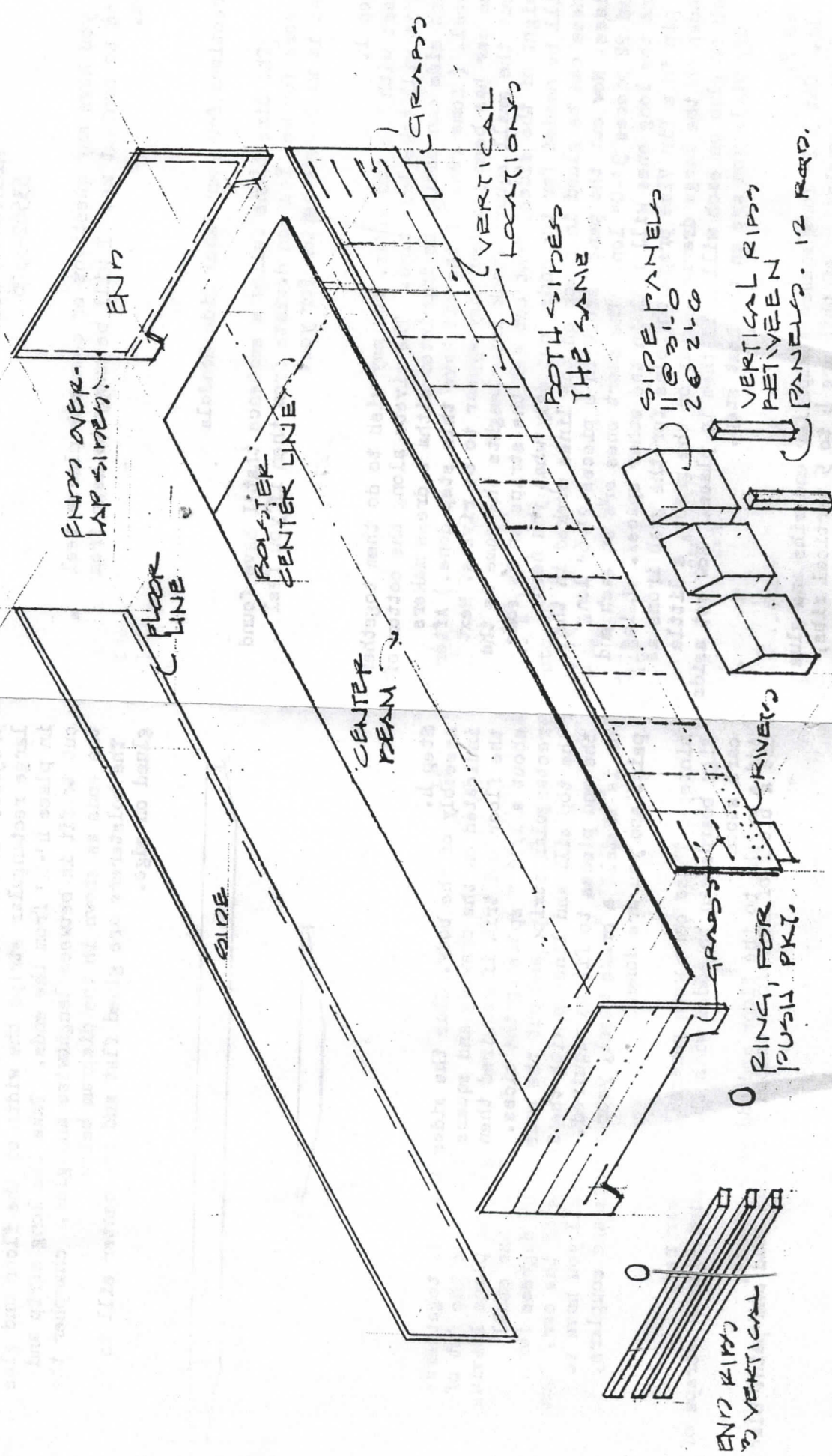
Assembly of the body. Glue the sides and ends together as indicated on the drawing and square up. Check the fit of the floor and trim if required then glue in place leaving about a 1/16" space up the sides. Take the small rectangular strips and cut the ends at 45 degrees for the top sill and line up with the inside of the car. Cut the end pieces to fit as required. Now all you have to do is install a brake wheel, your trucks and couplers, paint and you are done.

hints; These cars were generally box car red.

Sign boards can be added with the included scrapes scraps of card stock

add a weight to the floor and add your "load".

Use a block of styrofoam shaped for coal load and paint black



ALL PARTS WOOD EXCEPT GRASS AND PUSH PKT'S.

ASSEMBLY DRAWING
PANEL SIDE CONDOLA