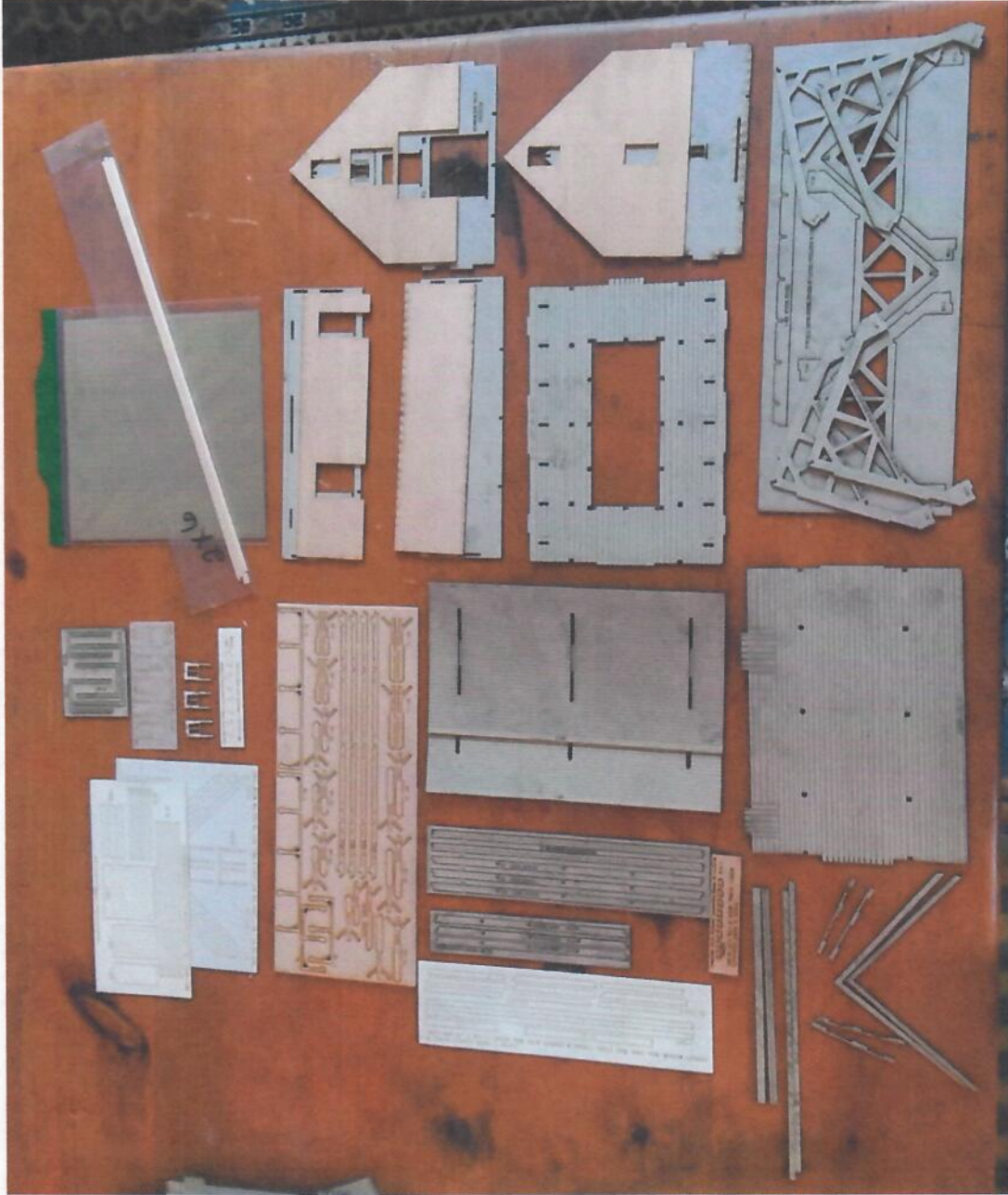
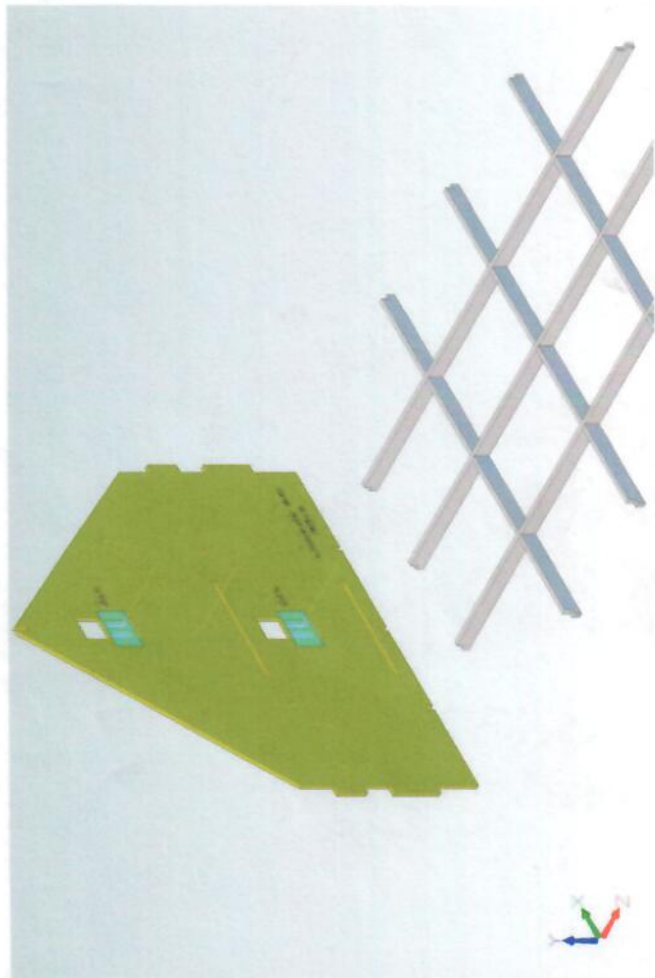
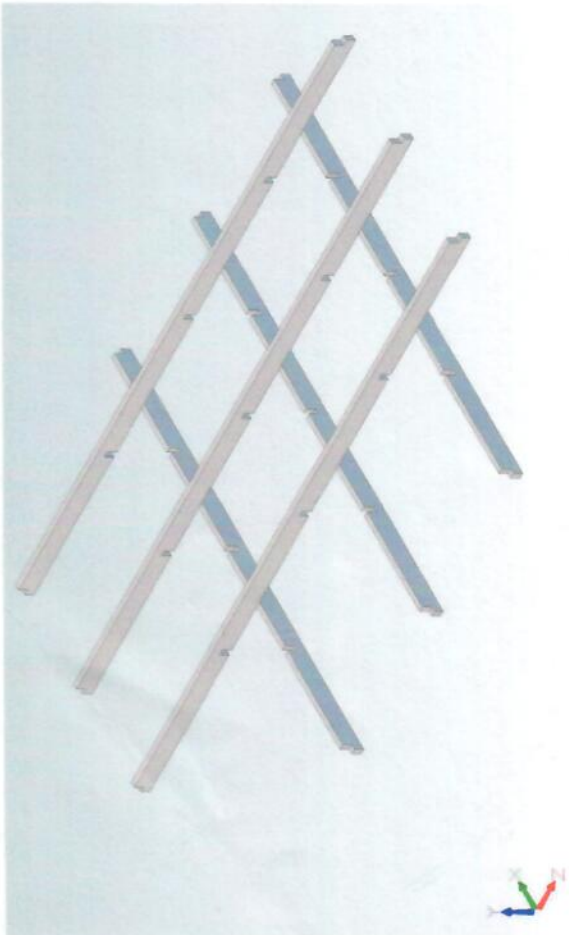
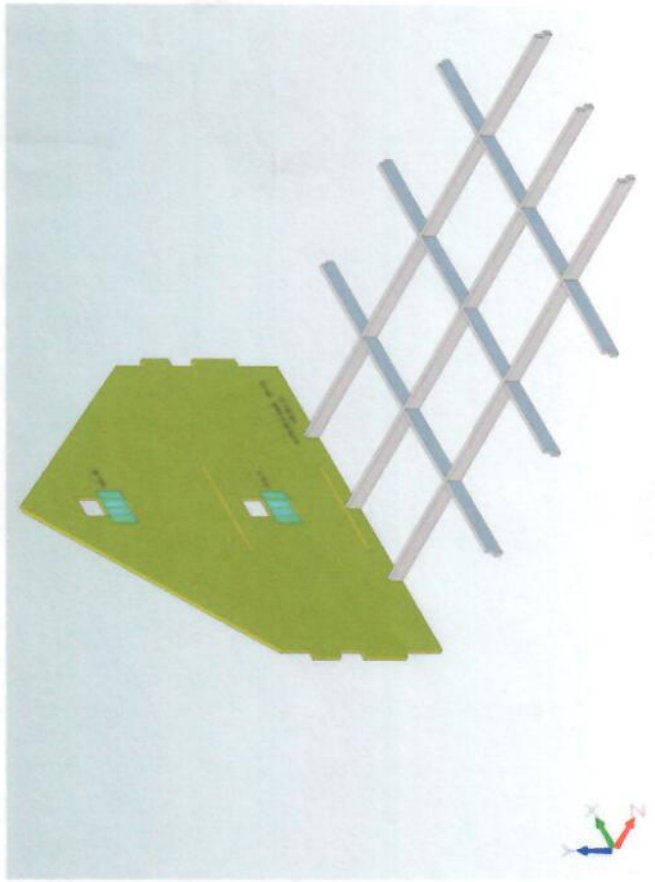
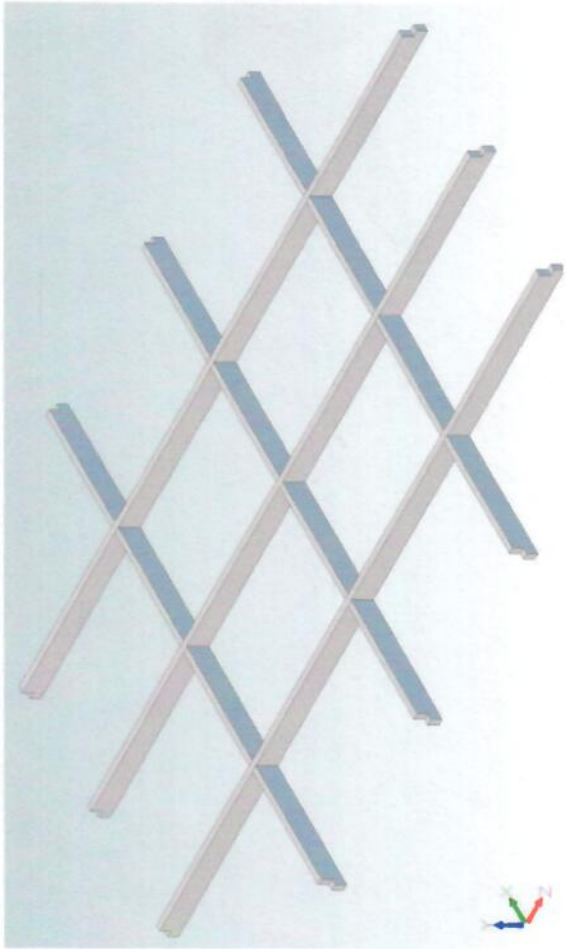


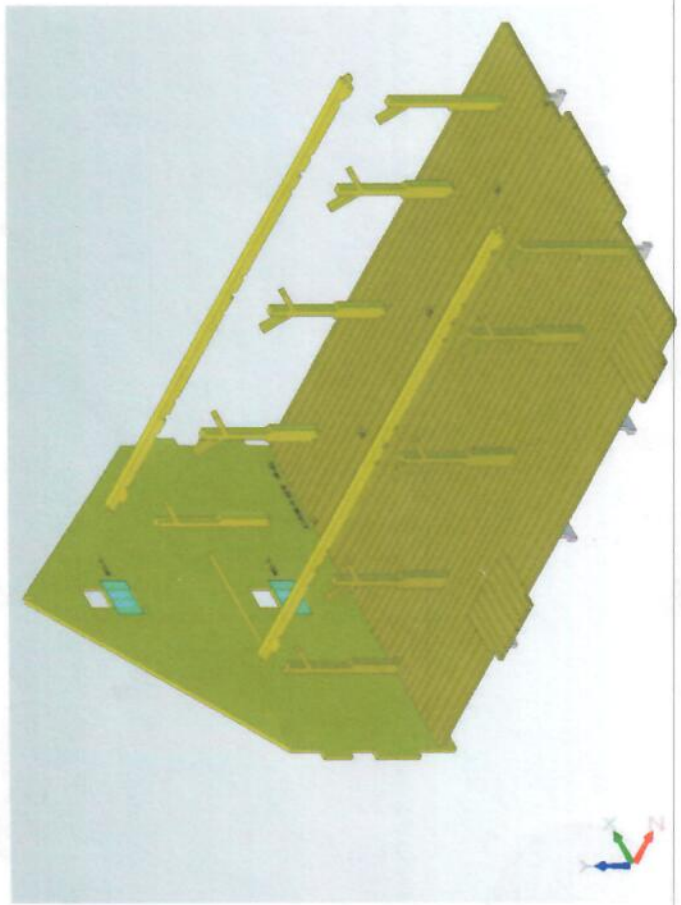
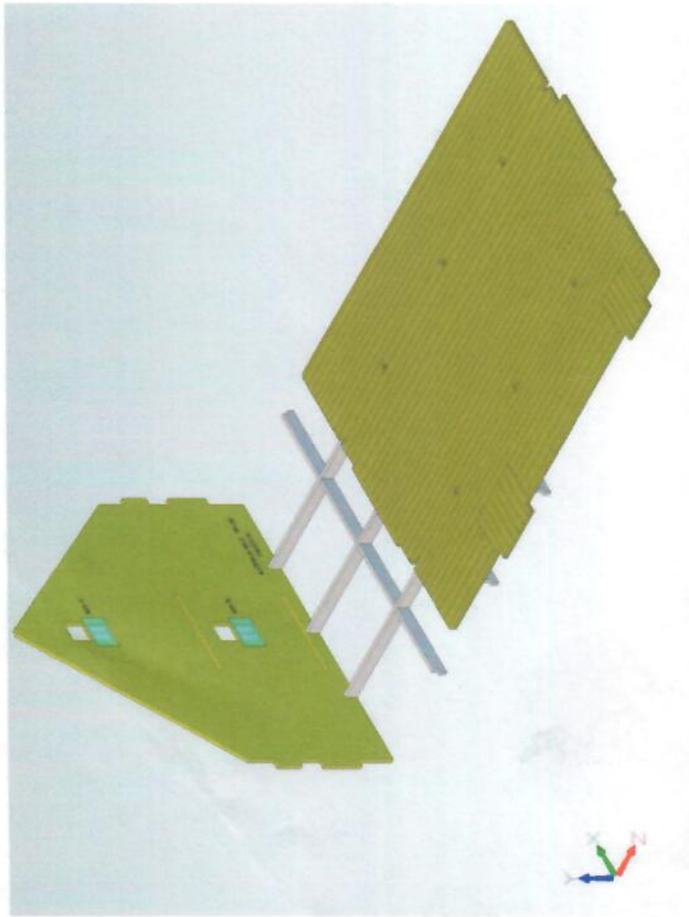
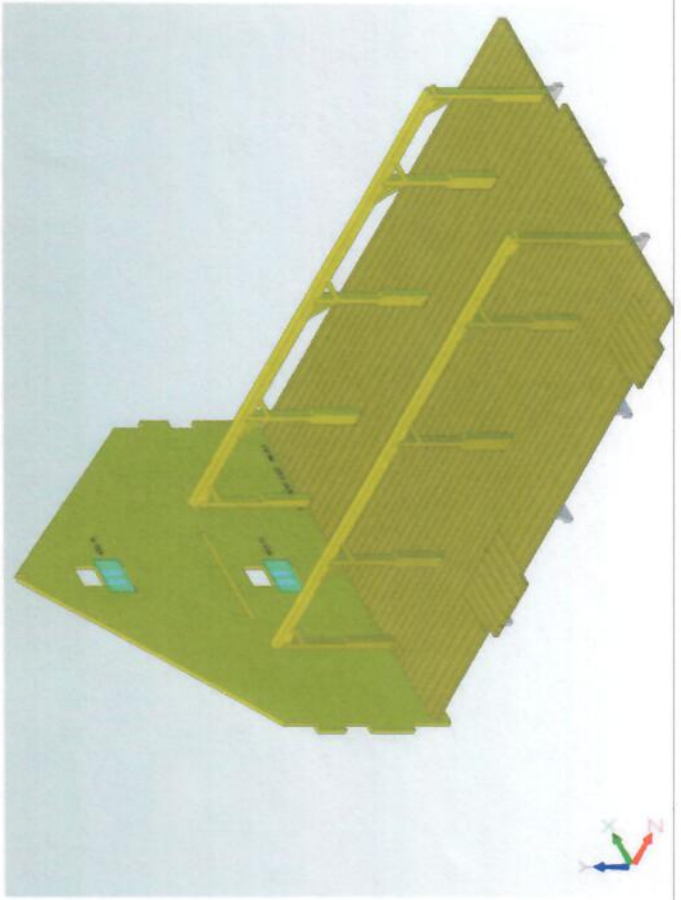
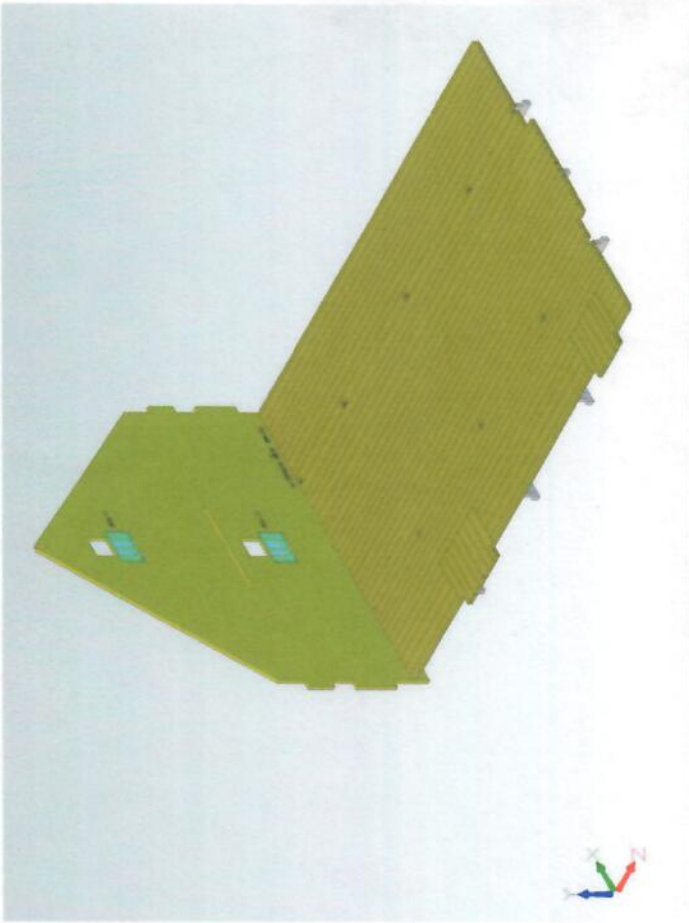
**INSTRUCTIONS TO ASSEMBLE THE BARN KIT**

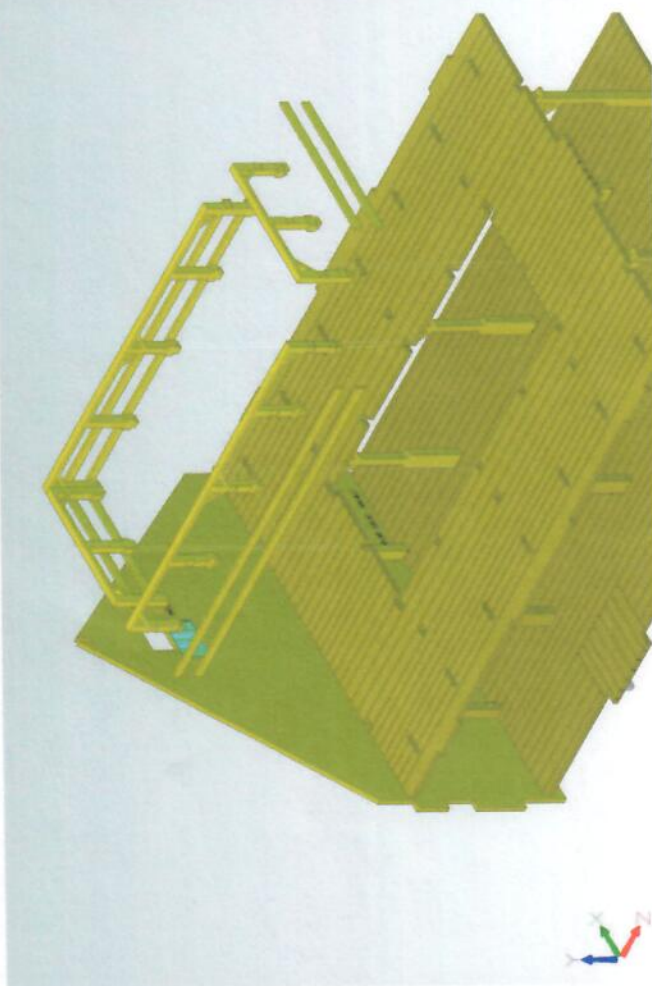
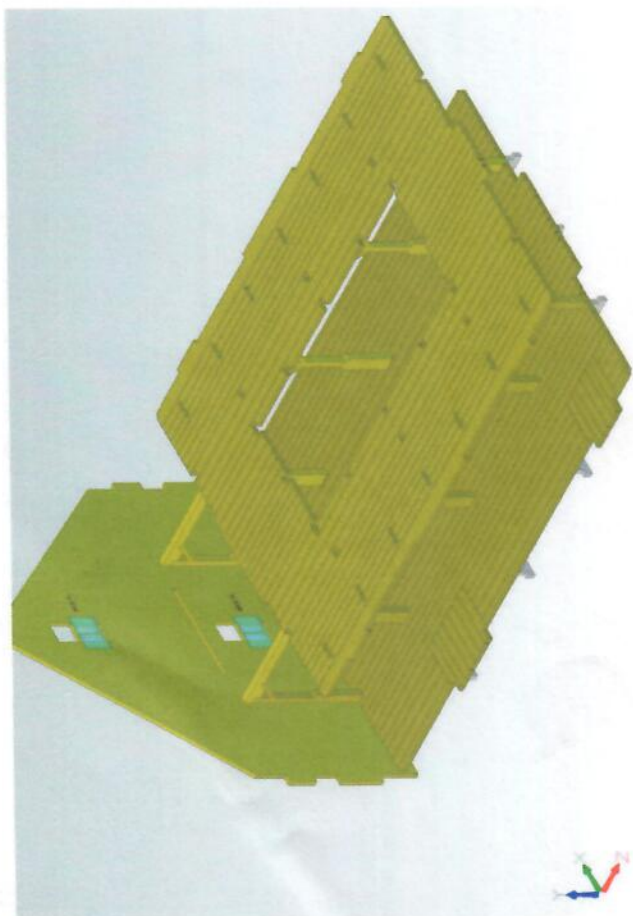
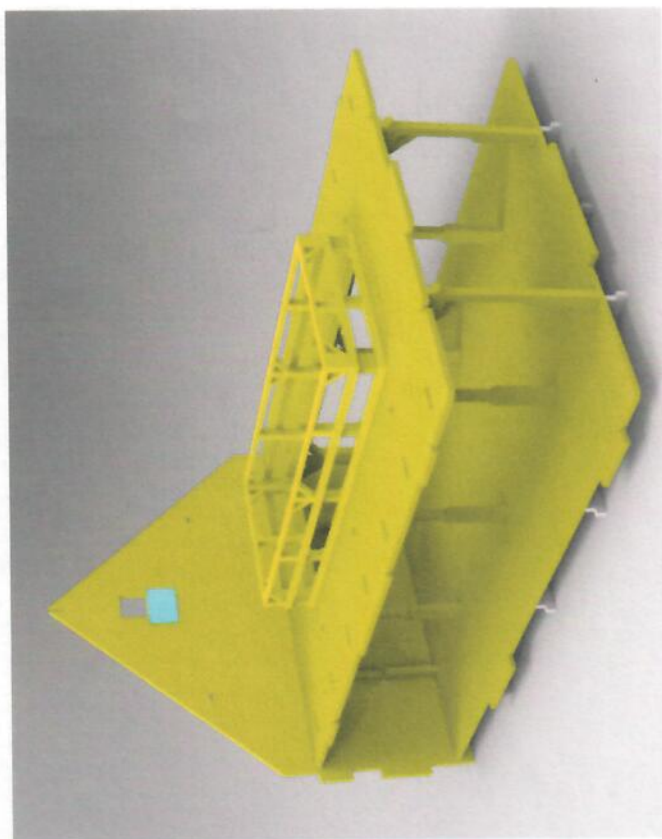
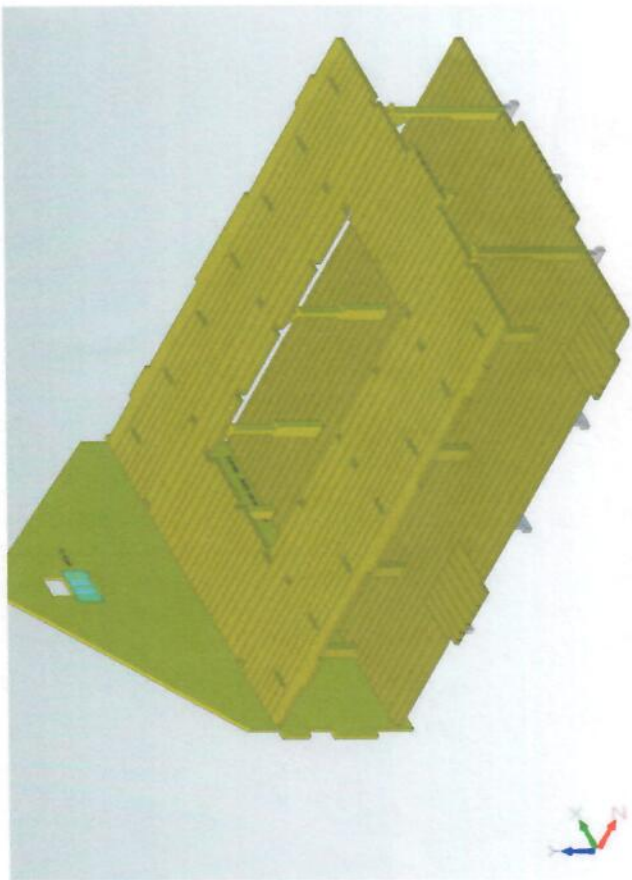
Enclosed in this kit is everything you need to create a New England Barn.

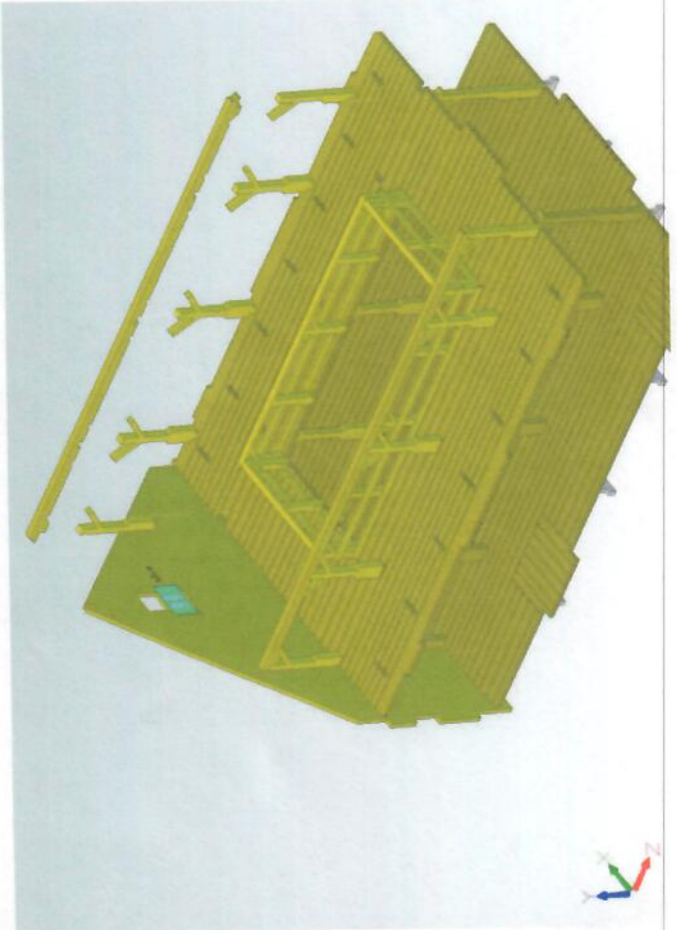
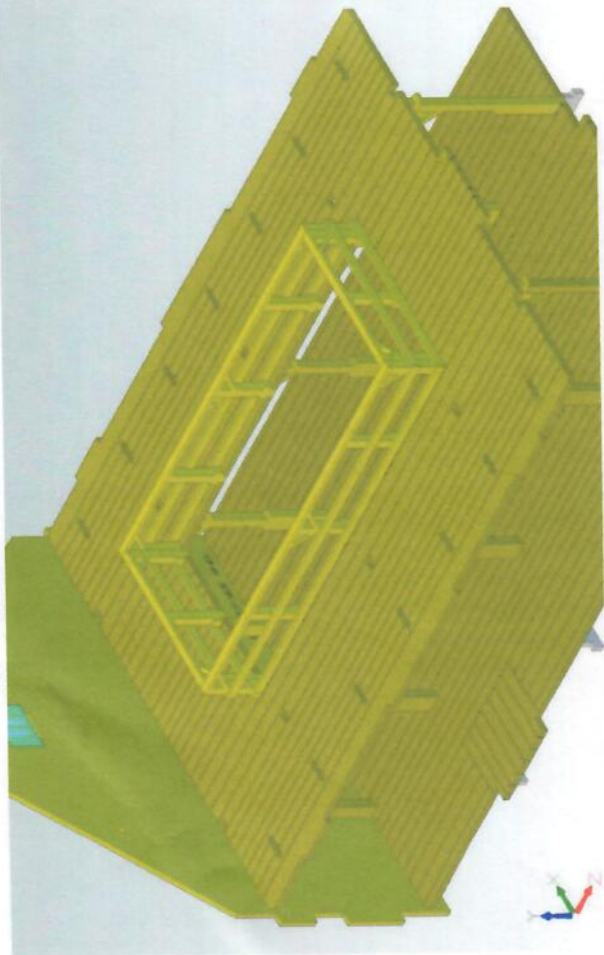
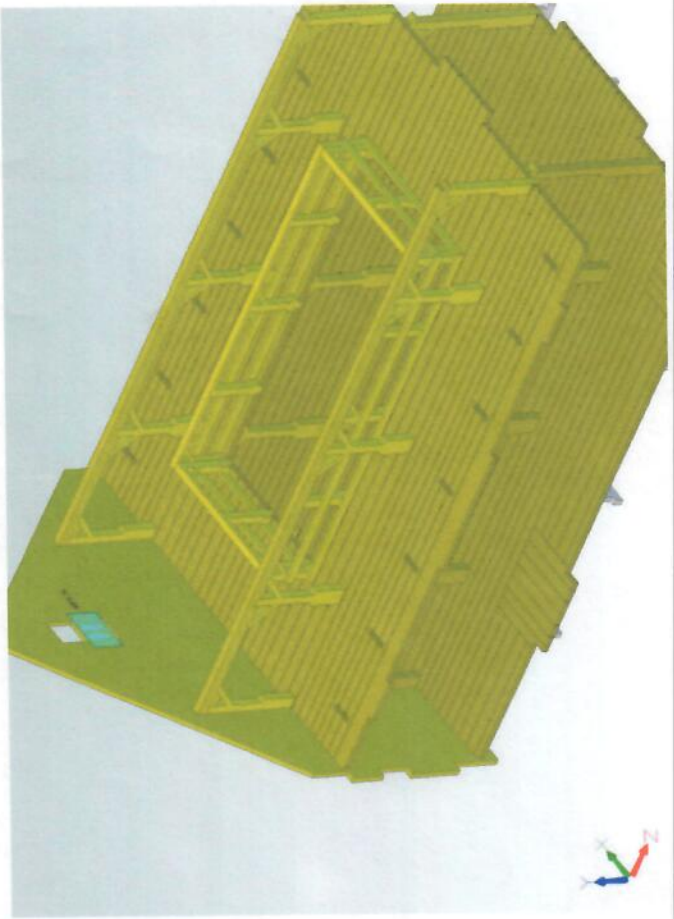
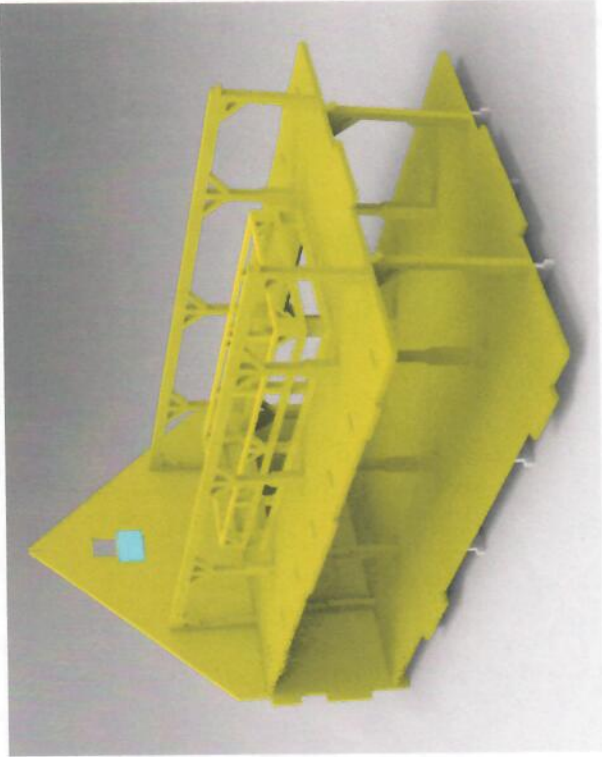


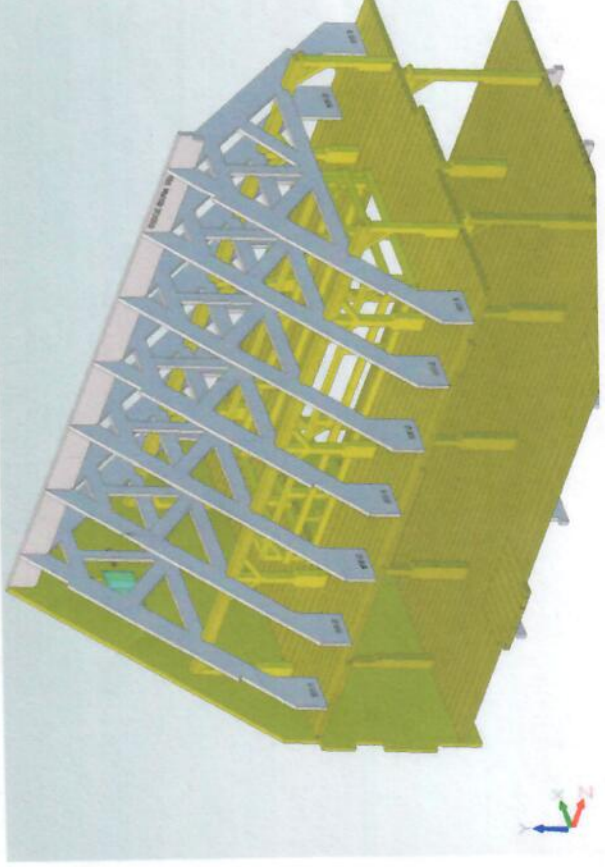
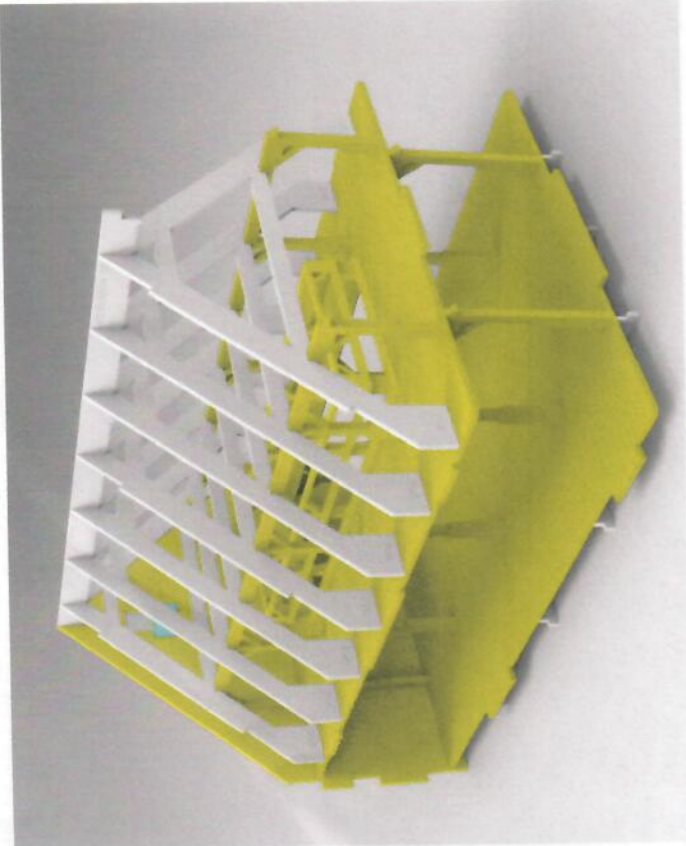
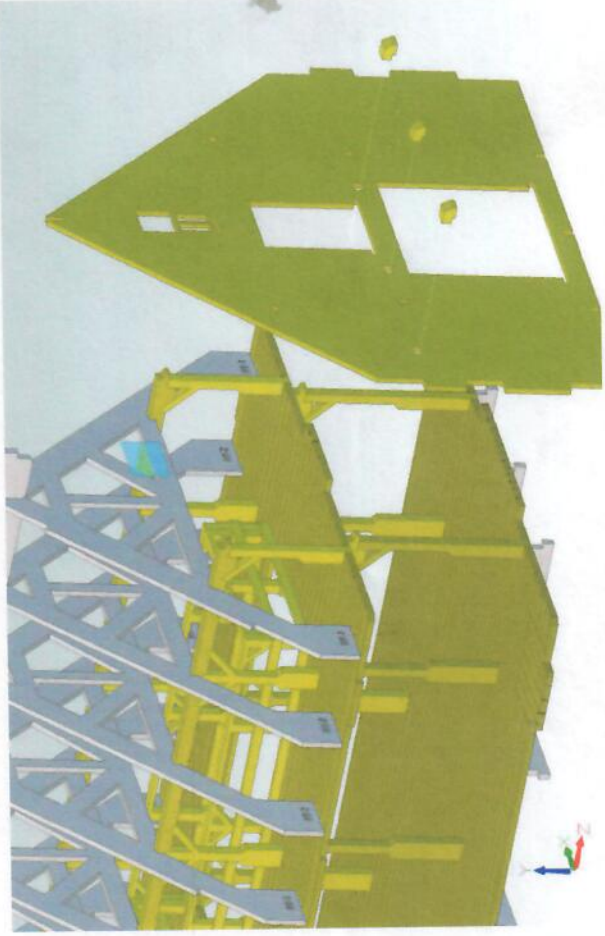
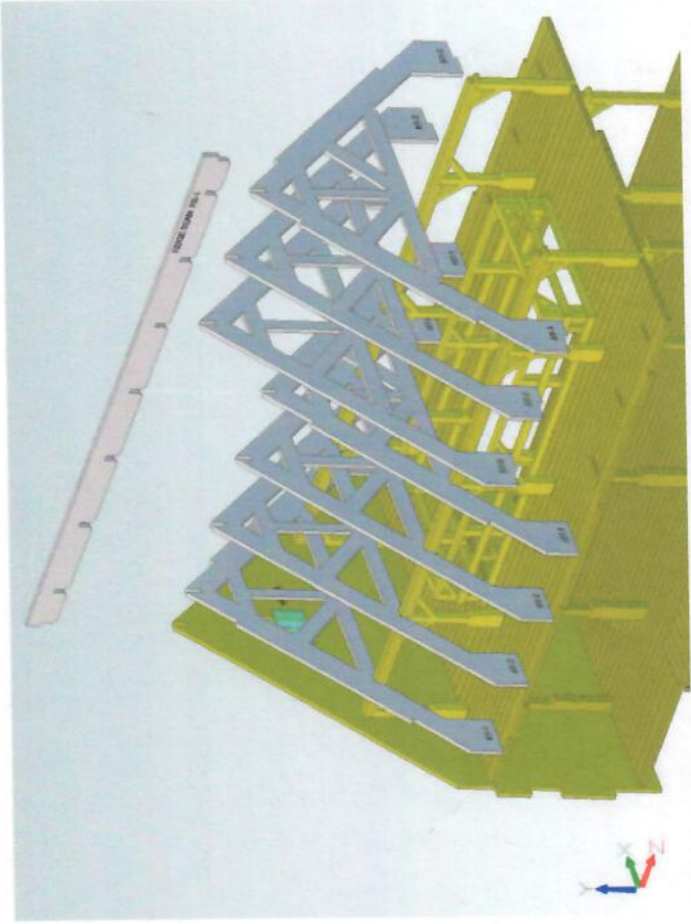
The instructions are done in photos, as follows:

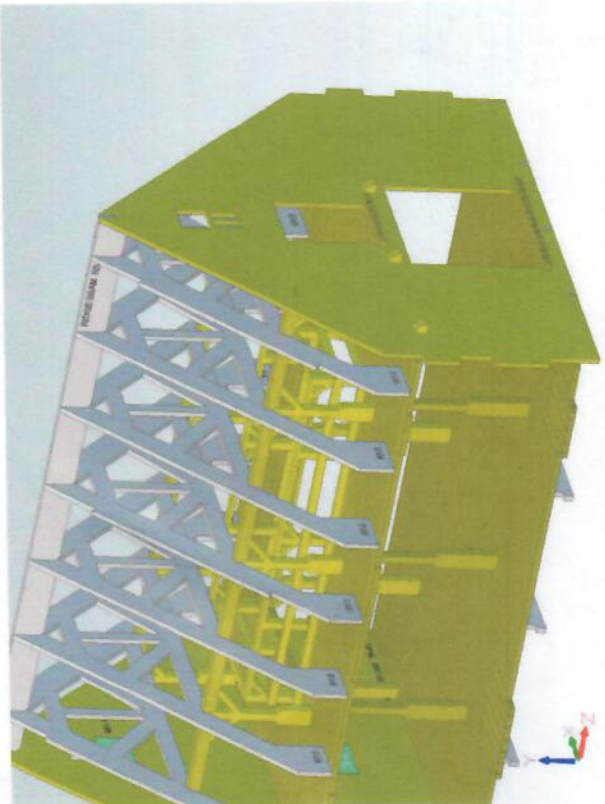
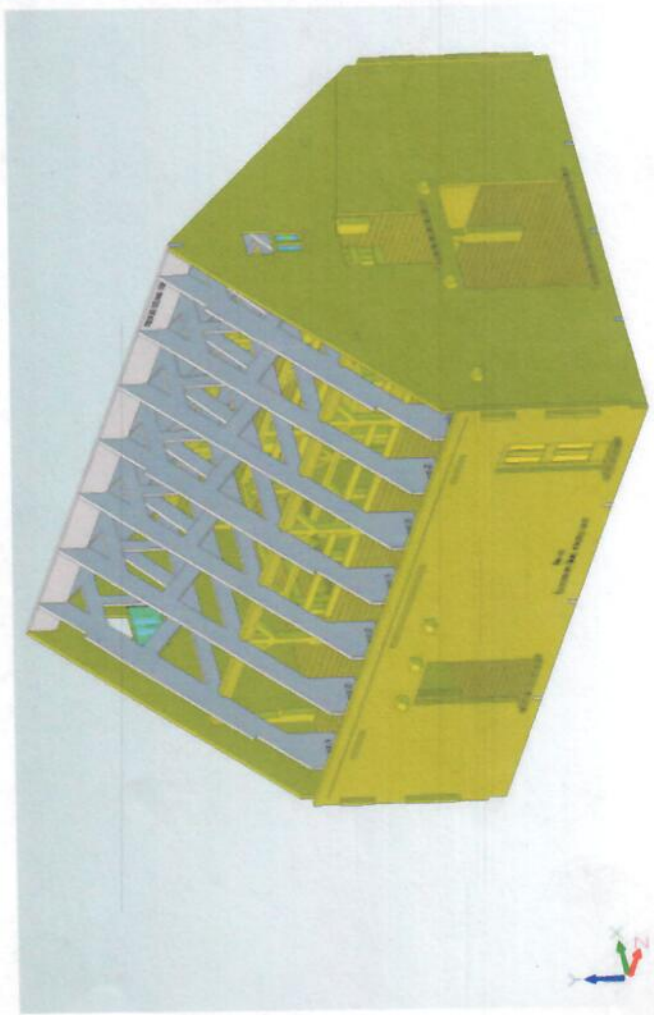
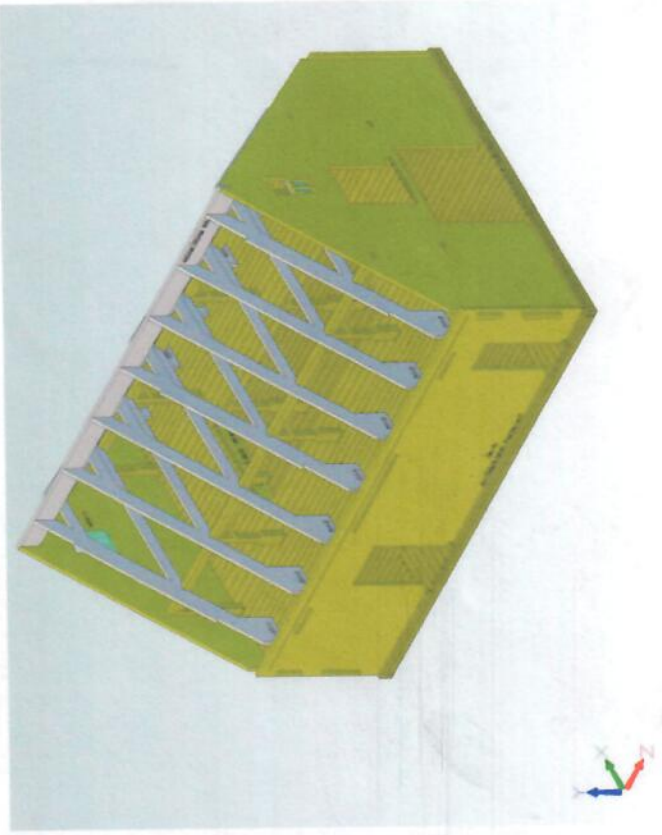
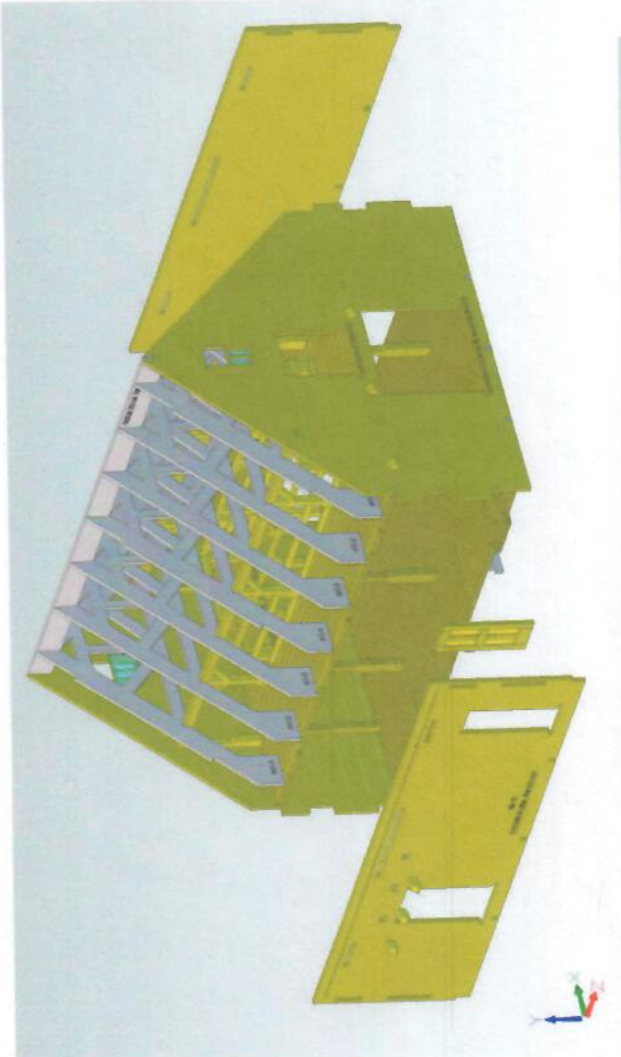


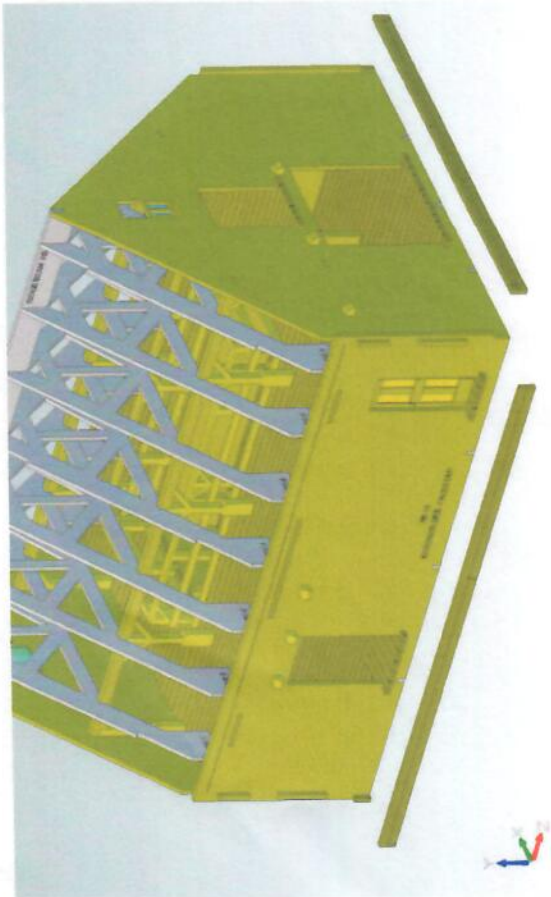
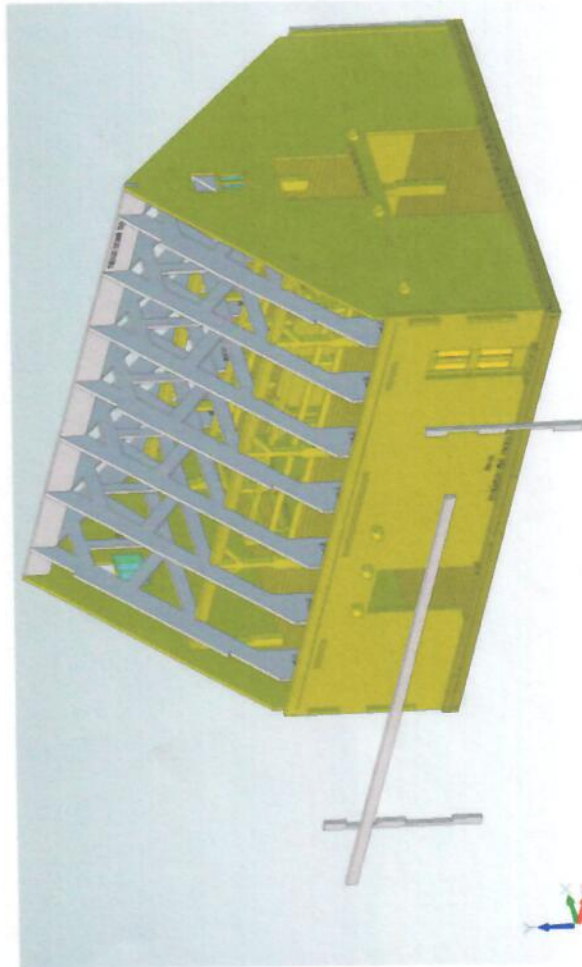
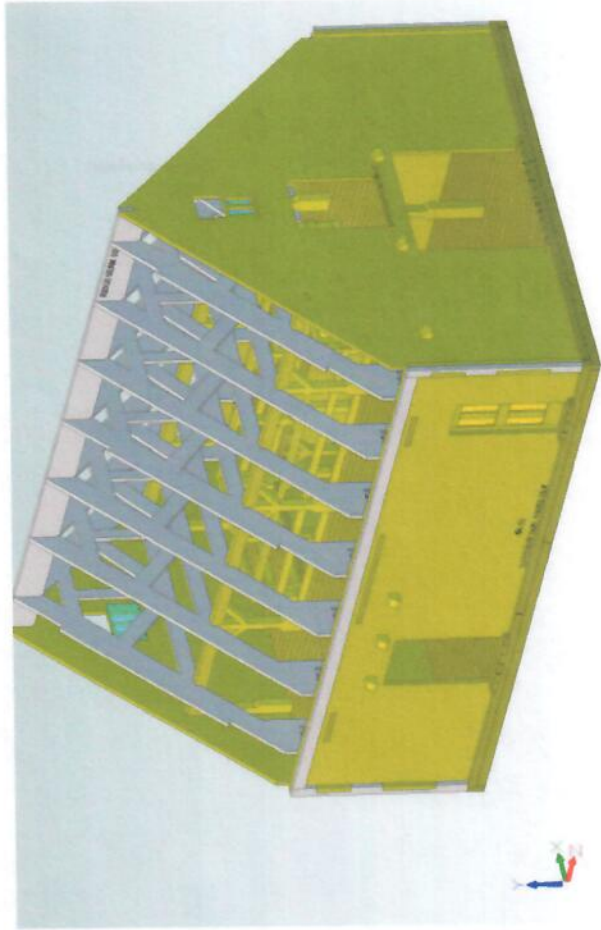
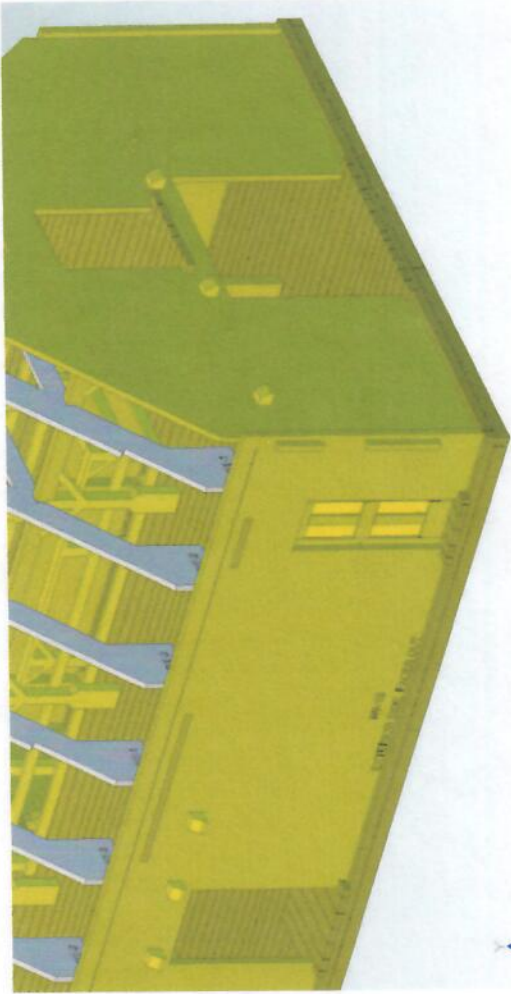


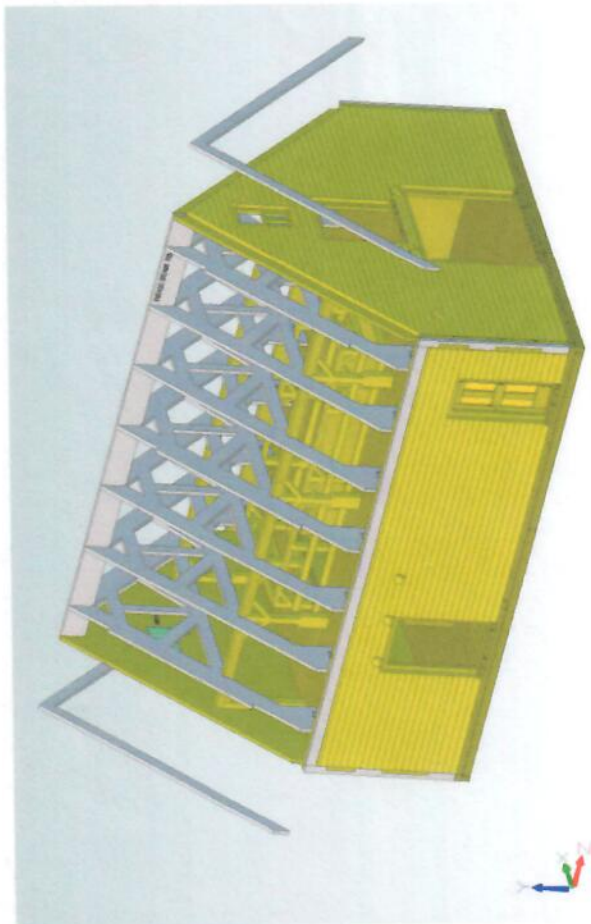
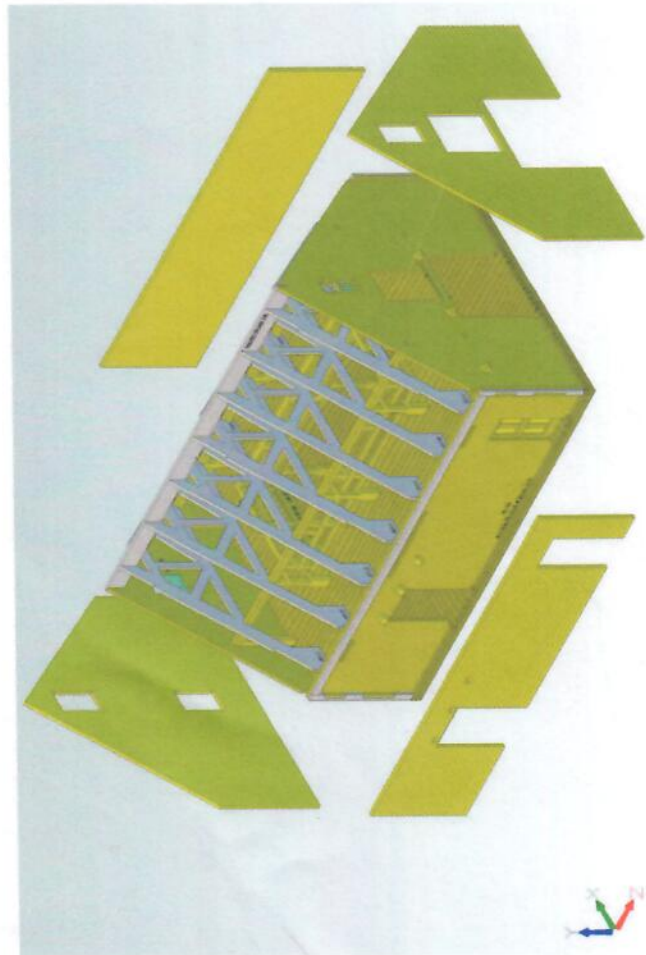
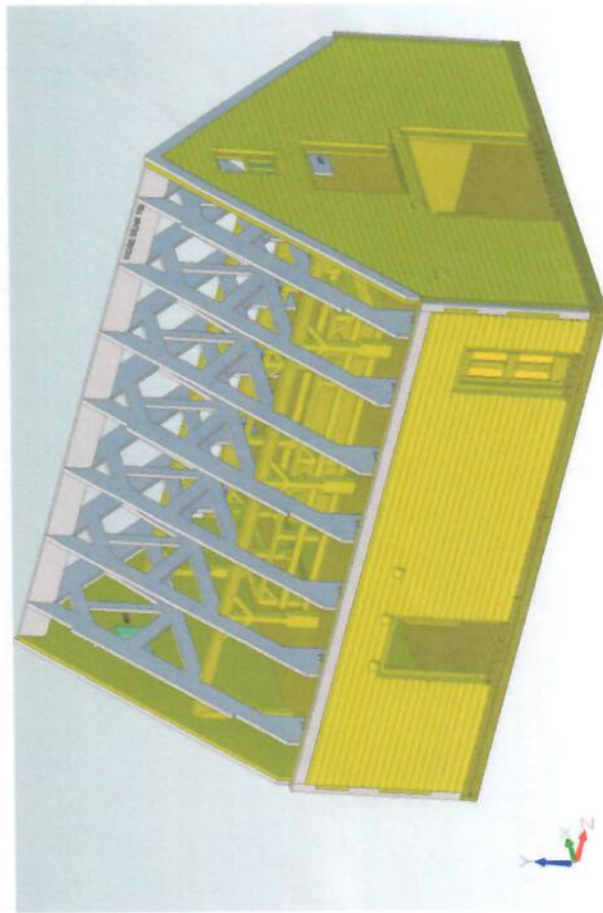
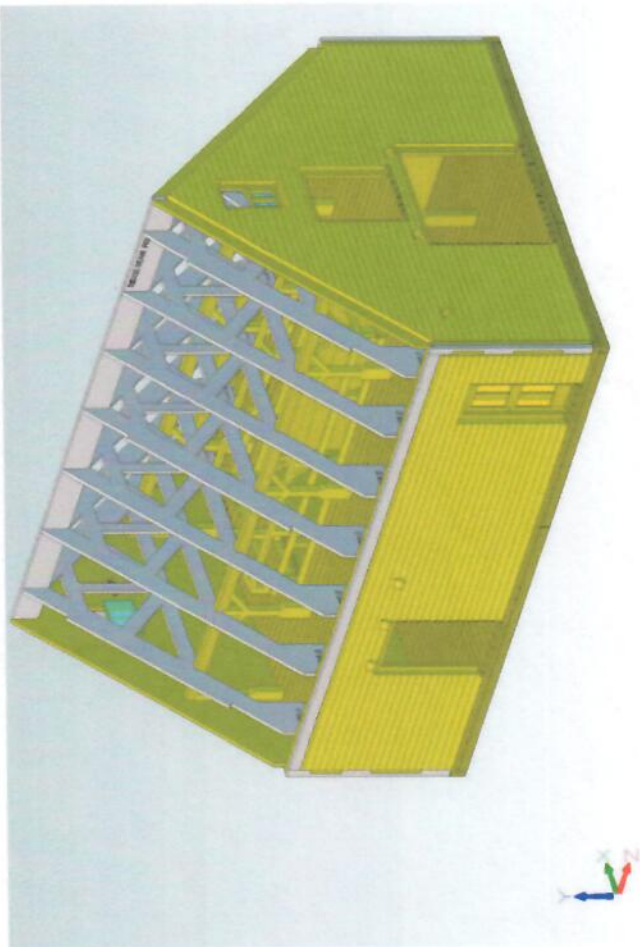


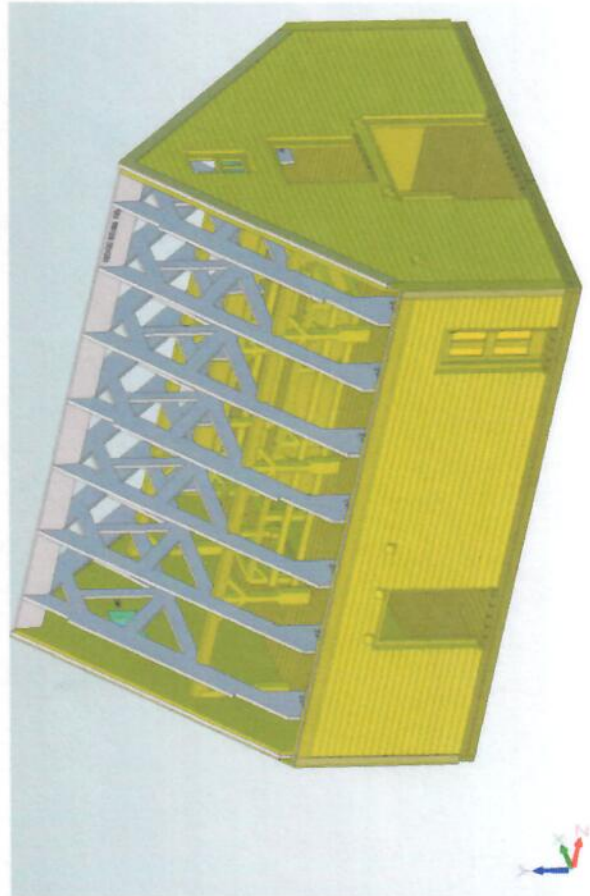
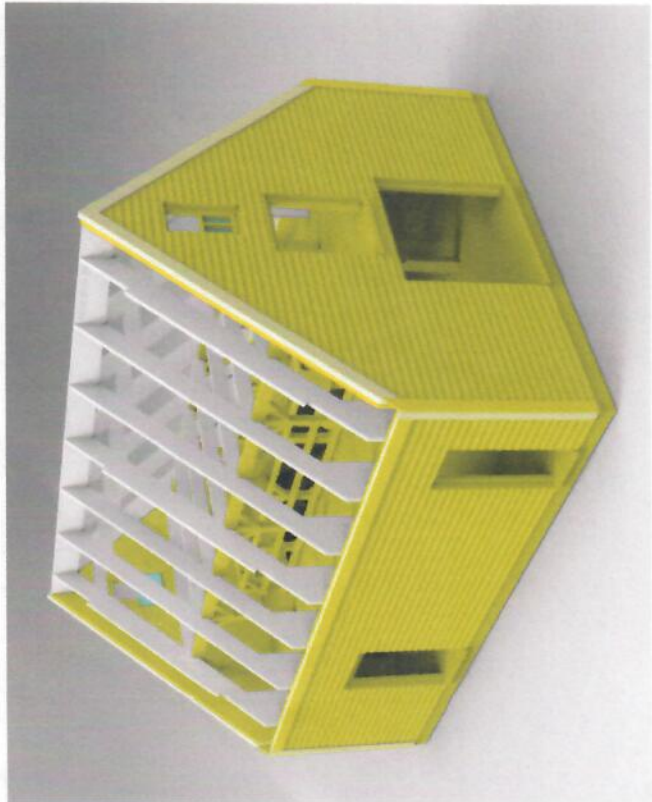
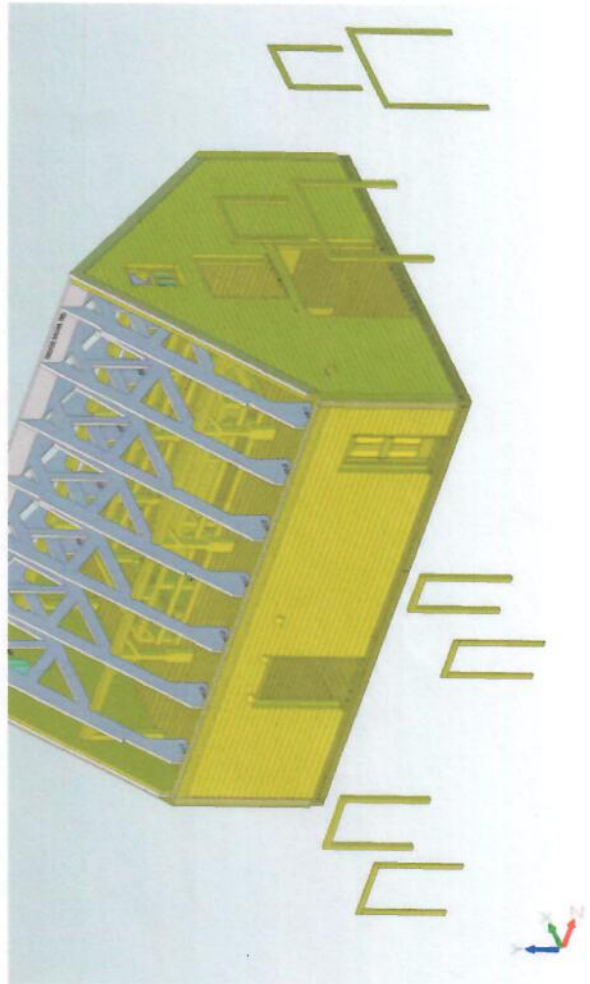
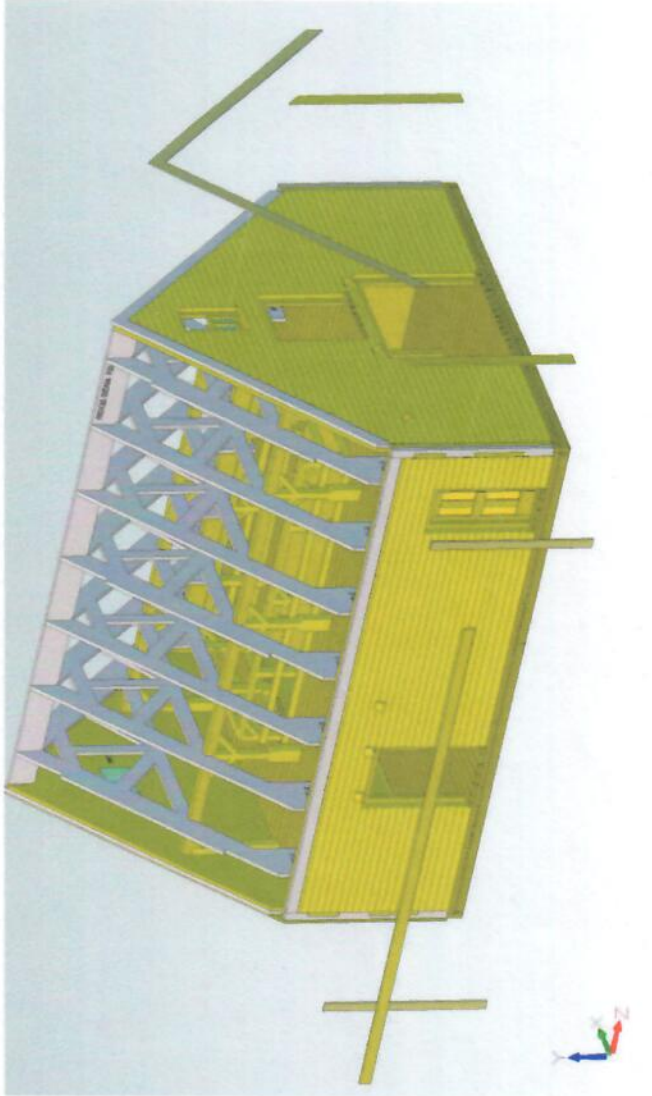


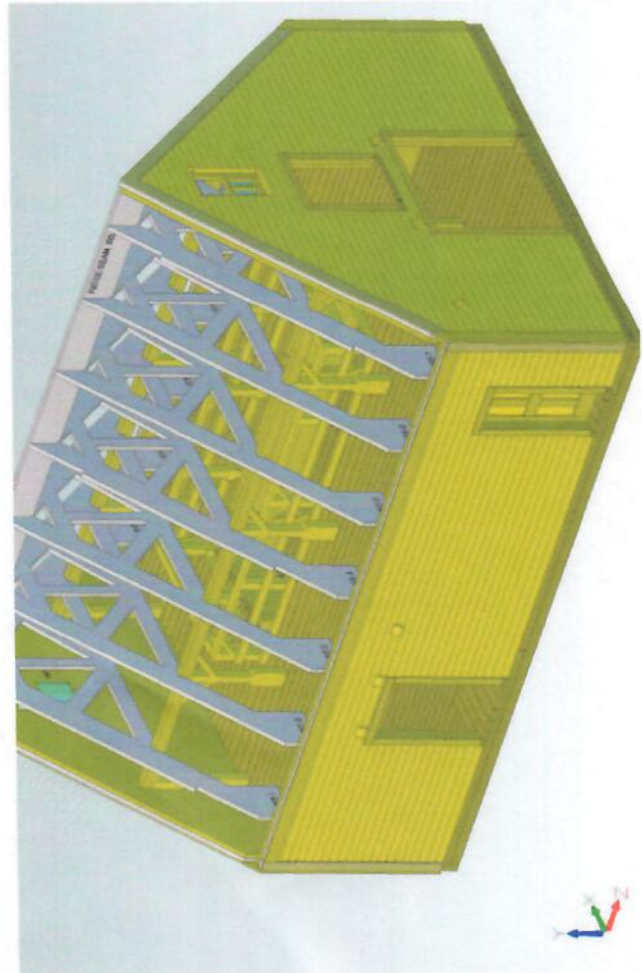
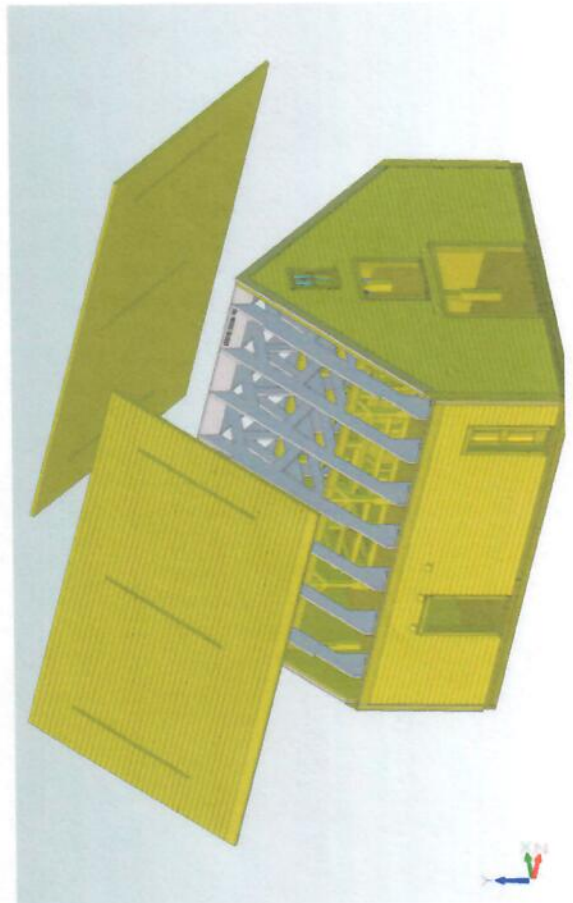
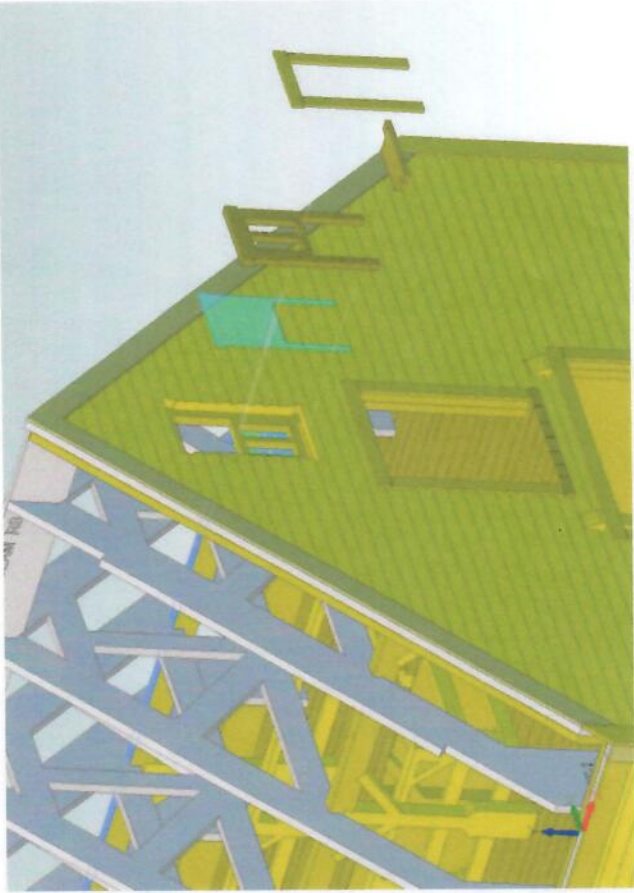


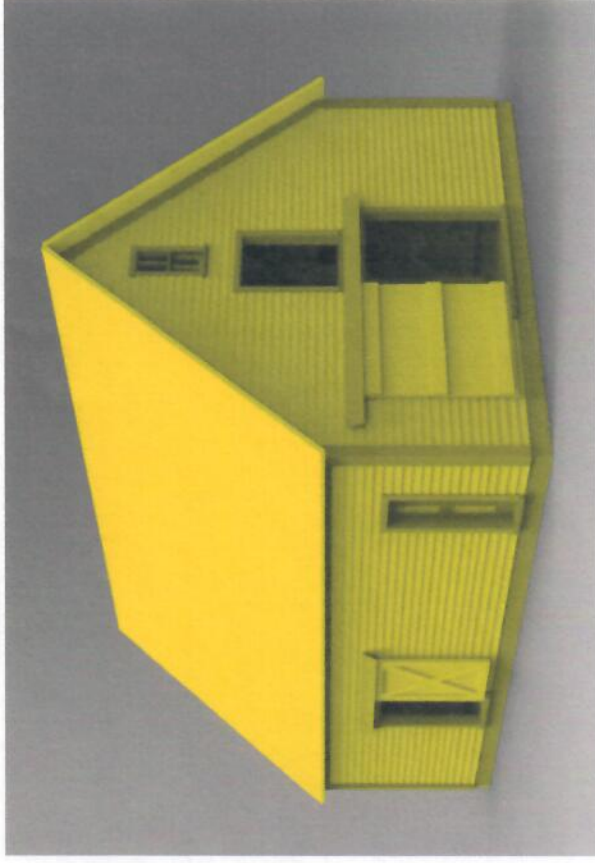
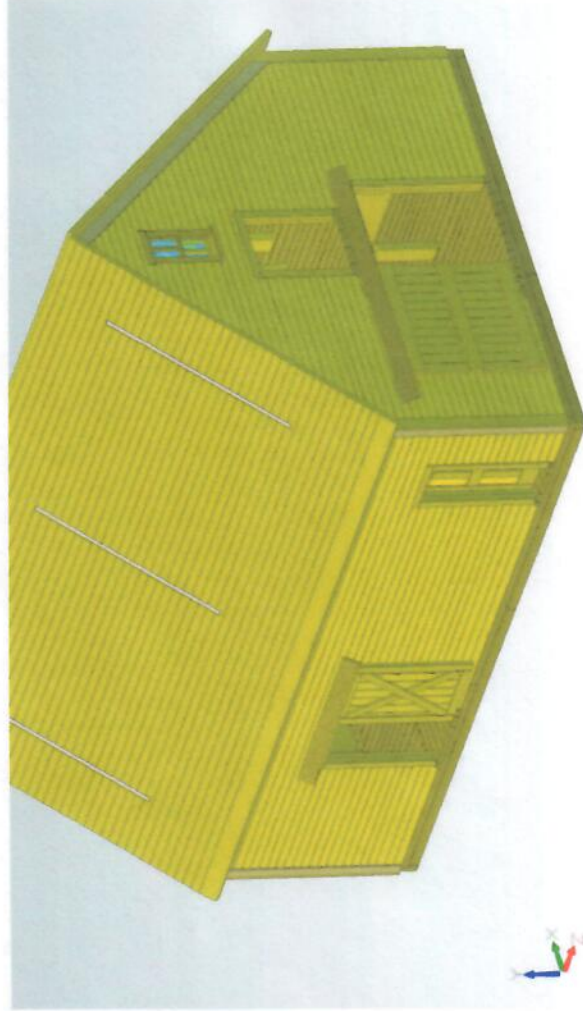
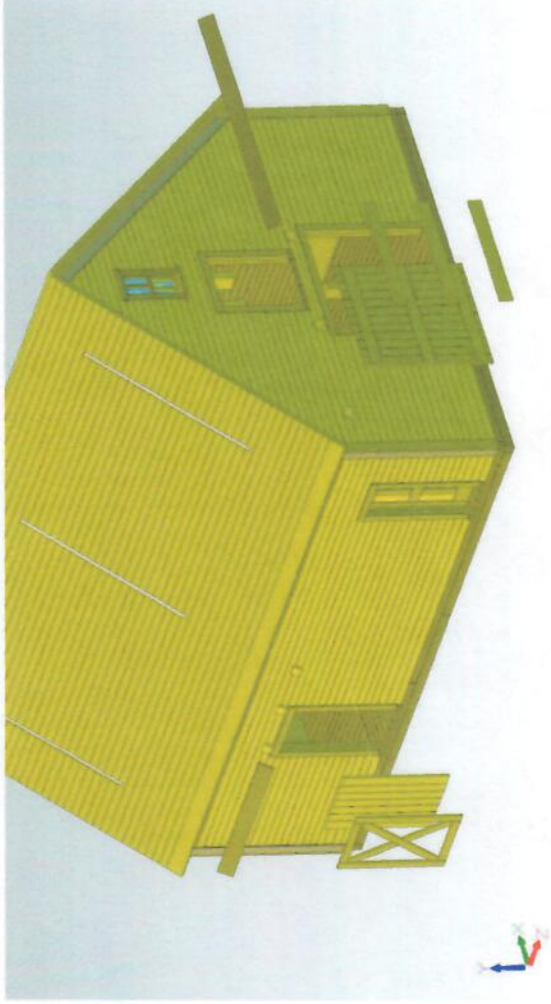
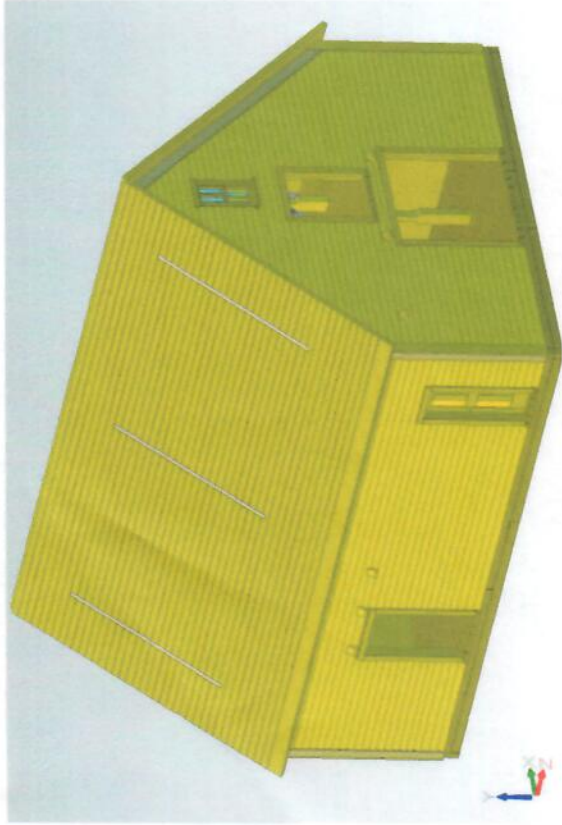












There is enough 2" x 6" lumber in this kit to create stalls on the interior to put cows in your barn.



**Thank you for your purchase! We hope you'll enjoy building this kit.**

## **TRAIN & TROOPER**



**Email:** [trainandtrooper@gmail.com](mailto:trainandtrooper@gmail.com)

**Website:** [www.trainandtrooper.net](http://www.trainandtrooper.net)