

FIG. A

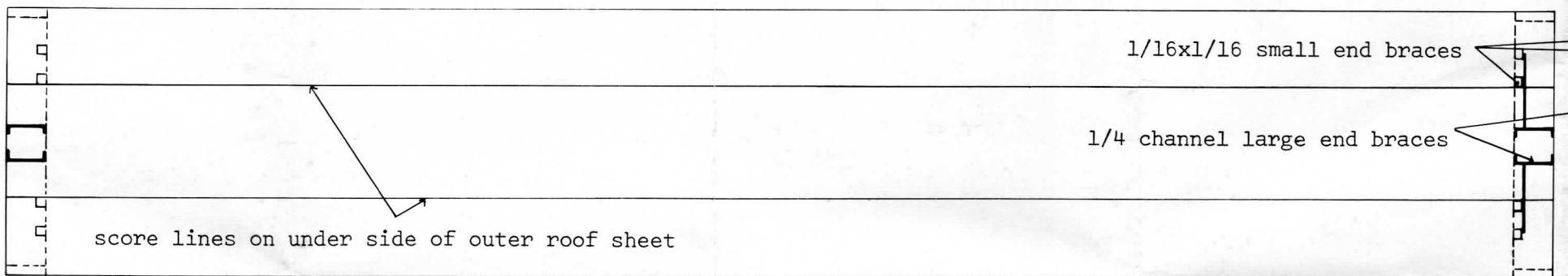


FIG. B

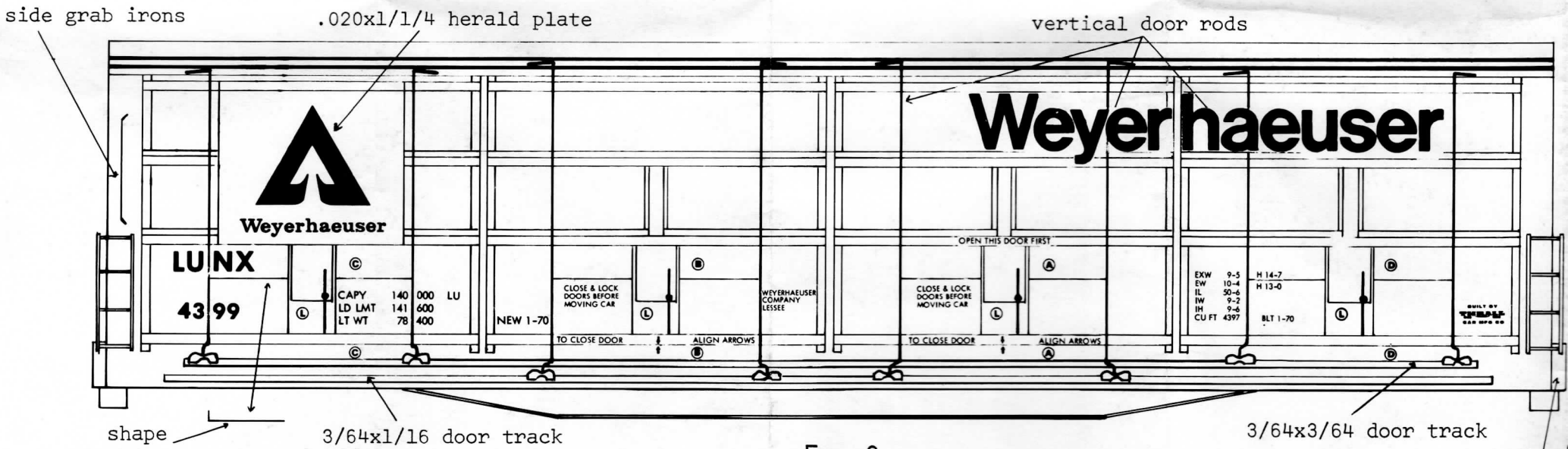


FIG. C

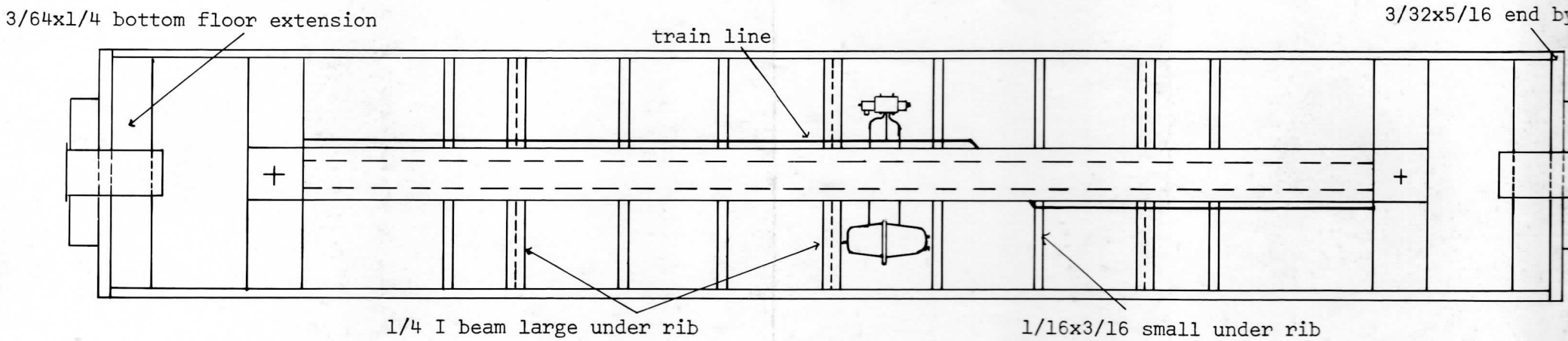


FIG. D

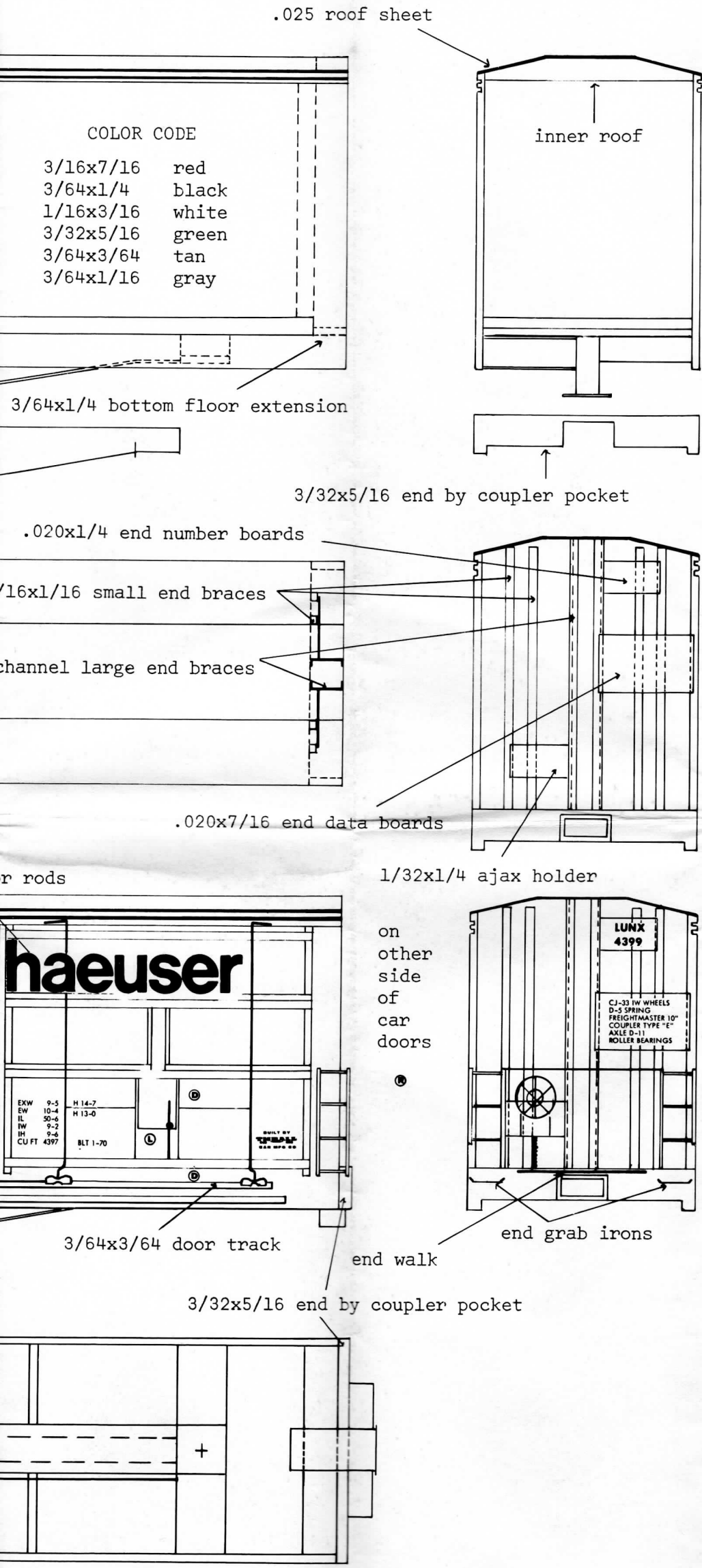
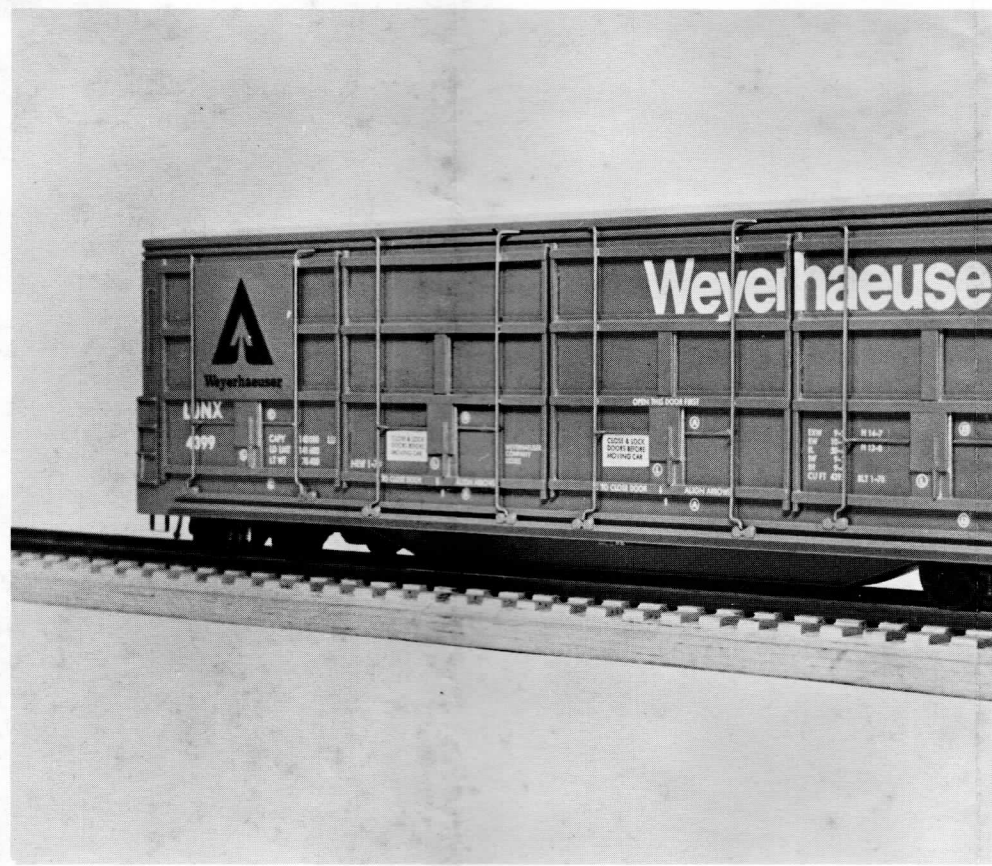
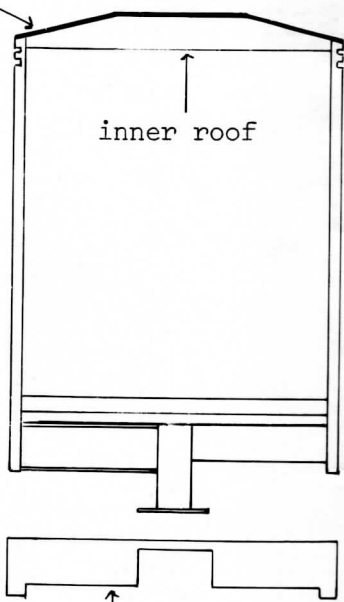


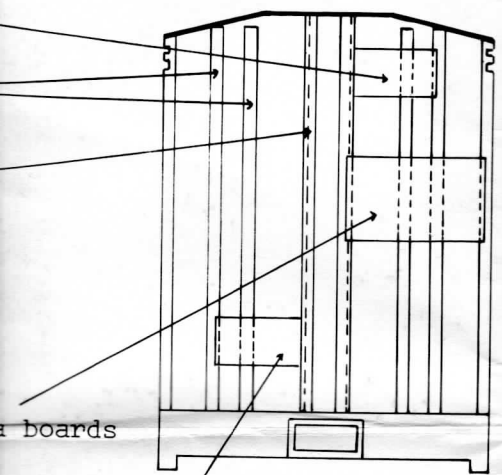
Fig. A. Assemble the end blocks to the floor of the inner roof. Add weight before gluing on the floor. The floor should extend 1/4" on each end beyond the roof. Sand the top of the sides to match the inner roof. Sand the ends to a smooth finish. Score the outer roof sheeting 1/2" in from the edge and bend from there so that it will bend to the inner roof. Glue to the inner roof and sand the edges flush. For a metal like finish, coat the basic body twice with Scalecoat Sanding Sealer, using 000 between coats. Cut the bottom floor extension from 3/64x1/4 and glue to the end of floor, between the floor and the sides. Glue the bolsters in place and shape the centersill from 3/16x7/16. The centersill is covered with .020x1/4 end number boards. The under ribs are cut from 1/4 I beam and the small end braces from 1/16x3/16. Place the air reservoir and the triple valve. #18 wire is used for the train line and #21 wire for the air line. #18 wire is used for the train line and #21 wire for the air line. Between the air reservoir and triple valve. Small end braces from 3/32x5/16, Fig. A, and glue them in place, Fig. D. Cut the large end braces from 1/16x3/16, Fig. B. End number boards cut to length from .020x1/4, end data boards cut from 1/16x7/16, Fig. B. Glue the ajax holder from 1/32x1/4, Fig. B. Glue the brake wheel in place. Place the end walks, ladders on the sides, butt the end ladders against the side of the car. Place the end hand rail between the top of the end walk and the side of the car. Wire. Glue the doors to the sides. Place the door rods from 1/32x1/4; and the top one from 3/64x1/4. Place the wheels to the tracks, Fig. C.. Bend the vertical door rods from #21 wire. Cut the herald board from 1/16x7/16 and glue in place. Form the end and side grab irons from 1/16x3/16. The steps from flat wire. To obtain the correct color, Green, mix the following Scalecoat colors. 68 parts of Reffer Yellow, 24 parts of #22 U.P. Yellow, 14 parts of Southern Green, 2 parts of #11 White and 1 part of #12 White. After decaling, spray with a coat of Scalecoat Sanding Sealer finish, to hide any decal film. Your car is now ready for couplers and roller bearing trucks of your choice. If you find any part missing or broken, write for free



f sheet

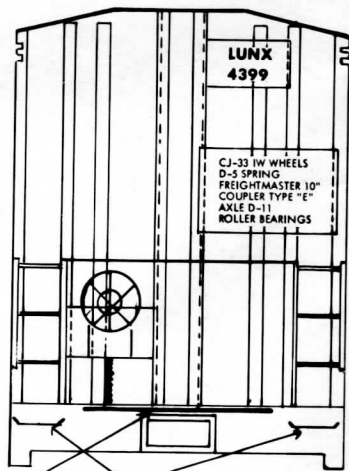


1/16 end by coupler pocket



1/32x1/4 ajax holder

on other side of car doors



end walk

coupler pocket

Fig. A. Assemble the end blocks to the floor followed by the inner roof. Add weight before gluing on the sides. Sides should extend 1/4" on each end beyond the roof and end blocks. Sand the top of the sides to match the inner roof contour. Sand the ends to a smooth finish. Score the under side of the outer roof sheeting 1/2" in from the edge and then 23/32" in from there so that it will bend to the inner roof contour. Glue to the inner roof and sand the edges flush with the sides. For a metal like finish, coat the basic body and all stripwood twice with Scalecoat Sanding Sealer, using 00 steel wool between coats. Cut the bottom floor extension to length from 3/64x1/4 and glue to the end of floor, between the sides. Glue the bolsters in place and shape the centersill from 3/16x7/16. The centersill is covered with .020x3/8. Large under ribs are cut from 1/4 I beam and the small under ribs from 1/16x3/16. Place the air reservoir and the triple valve. #18 wire is used for the train line and #21 wire for the pipes between the air reservoir and triple valve. Shape the coupler pocket ends from 3/32x5/16, Fig. A, and glue the coupler pockets in place, Fig. D. Cut the large end braces from 1/4 channel and the small ones from 1/16x1/16, Fig. B. End number boards are cut to length from .020x1/4, end data boards from .020x7/16 and the ajax holder from 1/32x1/4, Fig. B. Glue the ajax and brake wheel in place. Place the end walks, ladders on the sides, butt the end ladders against the side ladders and place the end hand rail between the top of the end ladders from #21 wire. Glue the doors to the sides. Place the door tracks, bottom one from 3/64x1/16; and the top one from 3/64x3/64. Glue the door wheels to the tracks, Fig. C.. Bend the vertical and horizontal door rods from #21 wire. Cut the herald board to length and glue in place. Form the end and side grab irons from #26 wire and the steps from flat wire. To obtain the correct Weyerhaeuser Green, mix the following Scalecoat colors. 68 parts of #15 Reefer Yellow, 24 parts of #22 U.P. Yellow, 14 parts of #19 Southern Green, 2 parts of #11 White and 1 part #1 Loco Black After decaling, spray with a coat of Scalecoat Flat or Gloss finish, to hide any decal film. Your car is now ready for couplers and roller bearing trucks of your choice. Should you find any part missing or broken, write for free replacement.

