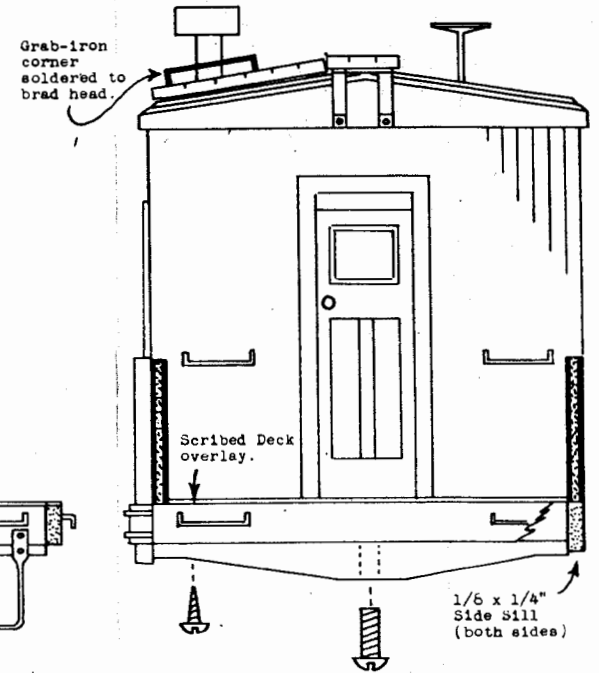


The "Boom Car" in actual use as same, provides an open area for the extending Crane of the railroad wrecker during transit. During transit the cabin portion of the Boom Car is always towards the rear of the train, the "Boom" thus is always pointing away from the engine. The reason for this method of transporting a wrecker apparently is based on the theory that should the crane or boom break loose while in transit the resulting damage would be far less if pointing away from on-coming trains or other obstacles near the railroad right-of-way.

In many instances the Boom Car serves in other capacities. A small derrick or winch mounted on its open section enables it to hoist heavy material from track-side to car level, as when loading adjoining flat cars or gondolas with cross-ties, heavy timbers, trucks and the like.



ASSEMBLY SUGGESTIONS

Examine the parts of this kit to learn the identity of each component and its position on the model. This will make method of construction more comprehensive and enjoyable.

Begin construction by fitting the scribed wood End exterior overlays and cast doors over the heavy End walls. Remove with sharp knife the half-cut door section in scribed overlays, obtain a good fit by filing lightly any protrusion on either the wood or casting. After cementing overlays and doors to End walls proceed to fasten these upon floor of car to dimension as determined by length of cabin sides.

The cabin sides are now lightly sanded parallel to scribing. Cast window frames are then inserted and cemented into pre-cut window openings. Do not force windows in place as such may cause distortion of either the car side or window. If necessary, enlarge window openings by filing. Clamp the car side loosely in vise and leaving exposed above vise jaws the thin portion of wood that is to be filed away. With all window frames installed it is advisable at this point to paint these before cementing in place the acetate "window panes". Also paint the End Doors. Fasten the Sides to both roof and floor, top edges of sides to be flush with top edges of ends. Fasten roof then mark off according to plan the position of the seam caps, or roof ribs. Material for same is provided milled to shape. Cut to size then notch in center each seam cap where it contours with roof peak.

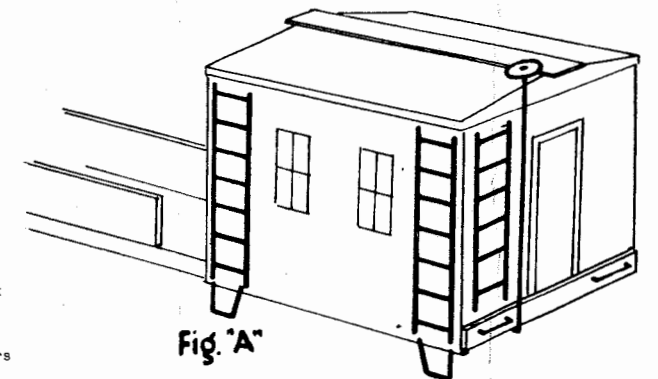
With all seam caps cemented in place carefully cut the roof-walk to size and also fasten with cement plus a brad at each end. Roof walk braces are fastened then the corner roof-platform supports are cut from strip wood material and cemented in place. Cement corner platforms to these and follow with installation of the L shaped corner hand-holds. A brad driven in each corner and soldered to hand-hold will greatly improve the appearance of these (see plan). Drill undersized holes for ease in driving in the hand-holds. This completes all roof details with exception of the smoke stack which is lastly installed (into pre-drilled hole) to prevent breakage during further assembly.

Build frame-work around doors at each end from the 1/32x3/32" strip wood. Now begin installation of the Side-Boards. Carefully sand these to smooth finish. These may be used as is or one "board" removed if a lower sided effect is desired. The Stake-Pockets have Stakes cast to an over-length size which are to be cut down to desired size. In no instance are the Stakes all cut to a uniform length, since a slightly irregular cutting is preferable for prototype appearance. Side sills are cut to size from 1/6x1/4" strip wood, these to be cemented top edge flush with top of floor. Cement both End Sills on at this point. Next measure off the required position of the Side Boards and Stakes as shown on plan then proceed to cement both on at same time. If model is to be subjected to rugged use it is advisable to drill a hole into stake pocket for fastening with brad in addition to holding with cement. Cement thin card floor overlay to open section of car.

Fasten End Sills (1/16x3/16") to both ends of car, top edge flush with top of floor. Turn car bottom side up and proceed with underbody details. Install truck bolsters, Center Sill, Brake Cylinder in that order.

With top side up again complete model by fastening Ladders (view of right side on Fig. "A" showing position of these), grab-irons and steps. Trucks and couplers of your own choice may now be installed. Athearn draft gear recommended. Use either Thomas Fox type truck, H&S Arch-bar, or Athearn Andrews. Cement smoke stack in pre-drilled hole and the model is ready for the paint shop.

Before painting make sure model surface is dust-free. A list of authentic color schemes as employed by leading railroads is printed in our catalog. After final coat of paint is applied letter with Decals to suit. Should decals tend to improperly adhere to the scribed wood surface we suggest the use of either "Decal-Set" or "40-X Paint Thinner" to make them stick to the uneven surface. With a fine brush apply small dabs very sparingly to loose edges of decal film allowing fluid to seep behind the decal. Let dry thoroughly then apply a thinned out coat of Dull or Semi-Gloss Varnish, whichever you prefer. Use an oil-base type Varnish that requires ordinary turpentine to thin. Varnishes of this type are readily available in most hardware stores.



Train-Craft Products	
BOOM CAR	
O GAUGE 1/4" SCALE	PLAN 14.