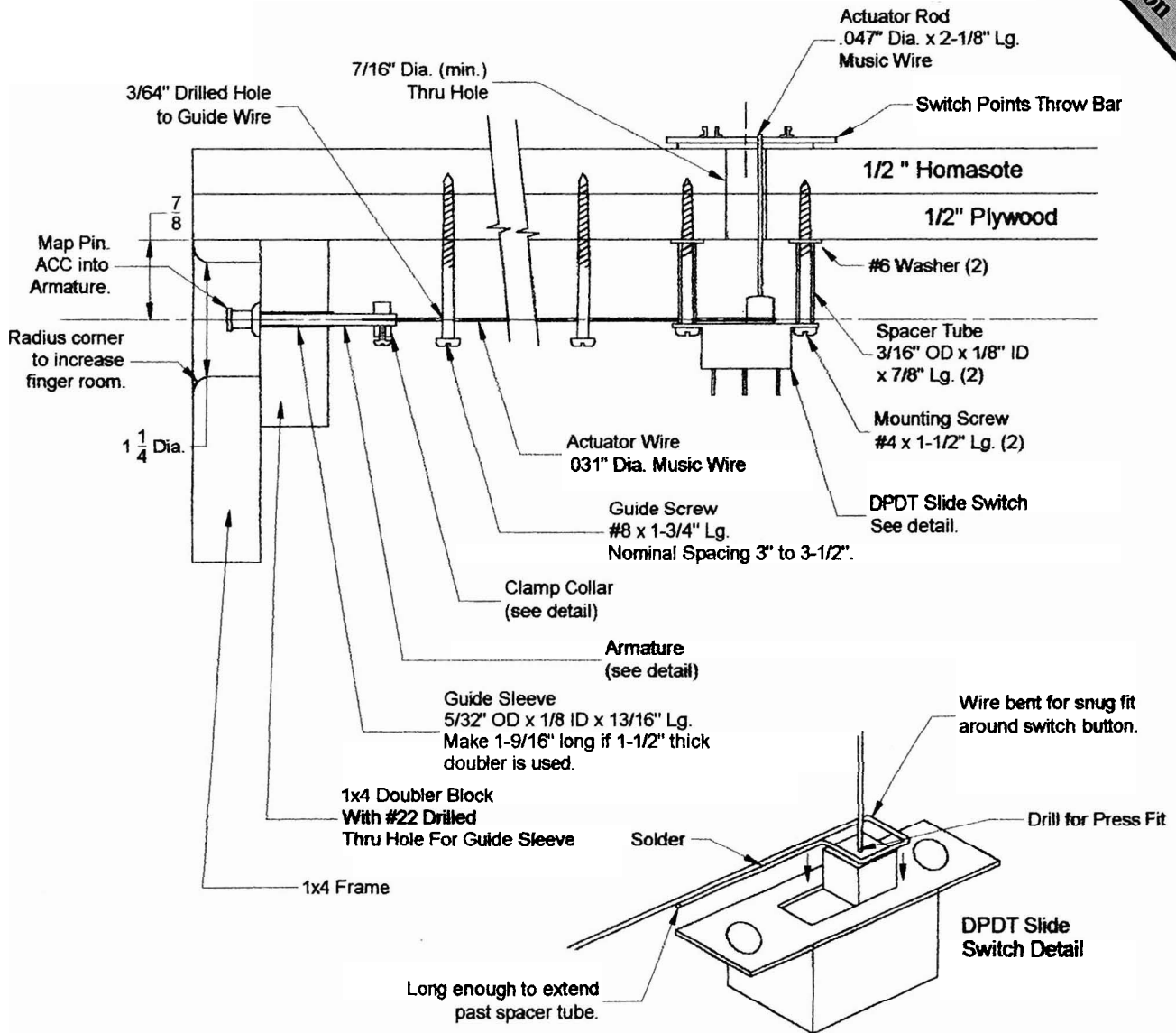


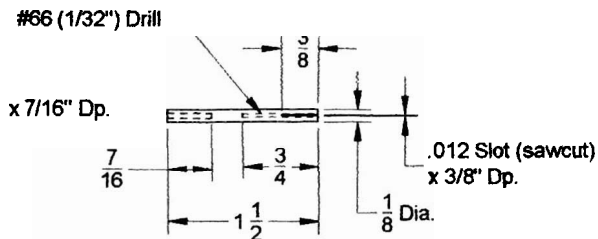
# Turnout Actuating Mechanism for HOUSTON S Gaugers Modular Layout

J. Troxell 6-5-89

**Module  
Corner**  
By Ted Larson



**Armature Detail**  
(1/8" Dia. Brass)



Armature Alternate Construction: 1/16" OD x 1/32" ID Tubing  
 Inside of 3/32" OD x 1/16" ID Tubing  
 Inside of 1/8" OD x 3/32" ID Tubing.  
 Solder all pieces together.

**Clamp Collar Detail**  
(3/8" Dia. Brass)

