

This kit is composed of tough styro-urethane resin castings. Since these castings are produced in flexible rubber molds some part variation should be expected. This means some sanding and filing will be necessary. Clean all flash from castings before assembly. A slight bow or warp in a casting may be fixed by warming the casting and straightening the bend. We recommend ACC type cement for assembly. An occasional bubble may be filled with any good modeling putty.

Step 1: Cement the sides and ends together. Note that the sides fit between the ends. Keep everything square. A rectangular piece of stiff styrene or cardstock will aid in this greatly. If you intend to handle the car frequently, we suggest cementing a wood or styrene "ridge pole" in place to support the roof. (Fig. 1)

Step 2: Score the centerline of the roof a little more deeply. Bend the roof along the score. Set the roof on the body, adjust for equal overhang on all sides. When you are satisfied, secure it with a few drops of acc. A toothpick or small bit of wire will be helpful. Cement the roofwalk in place. Make sure you line up the nail impressions with the saddles.

Step 3: File the frame to fit the body snugly. Remove the frame and drill to accept your choice of trucks and couplers. Note that the coupler pocket sticks out from the end. Now comes your first choice. Using the bottom view add the brake detail parts. The kit includes a cast soft-metal K-brake. Cement it in place where the brake cylinder is shown. Should you desire the more modern AB brake system shown they are available separately from Scenery Unlimited for \$2.00 plus .75¢ postage. Add as much brake piping and rigging as you desire,

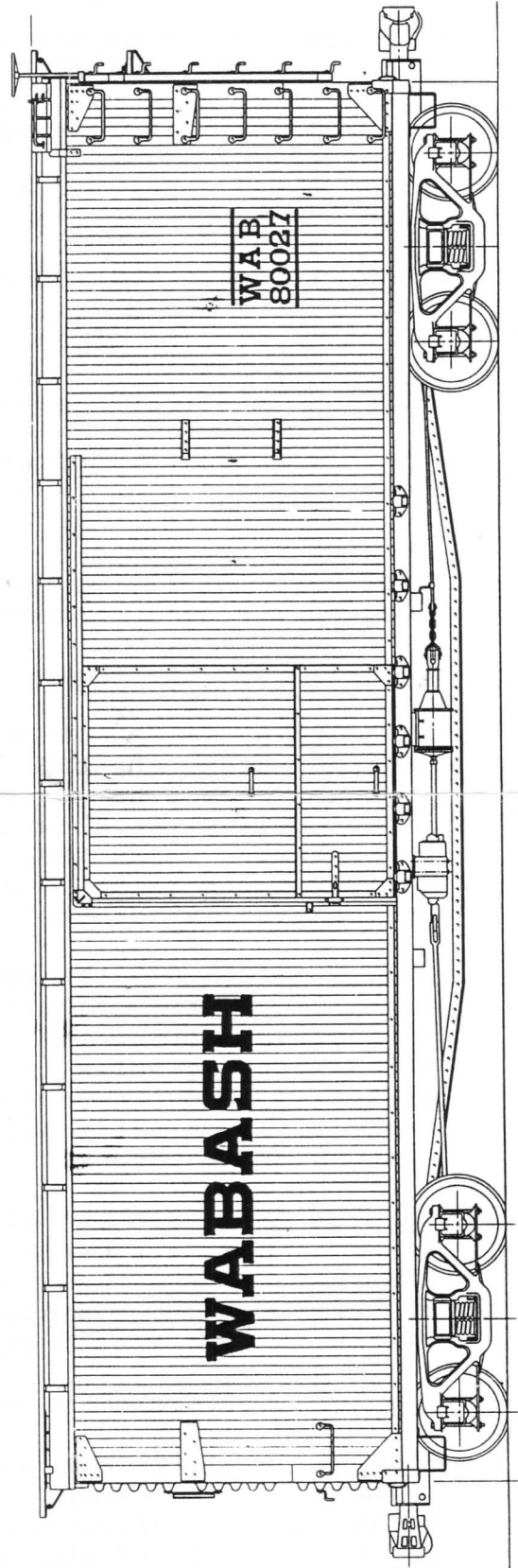
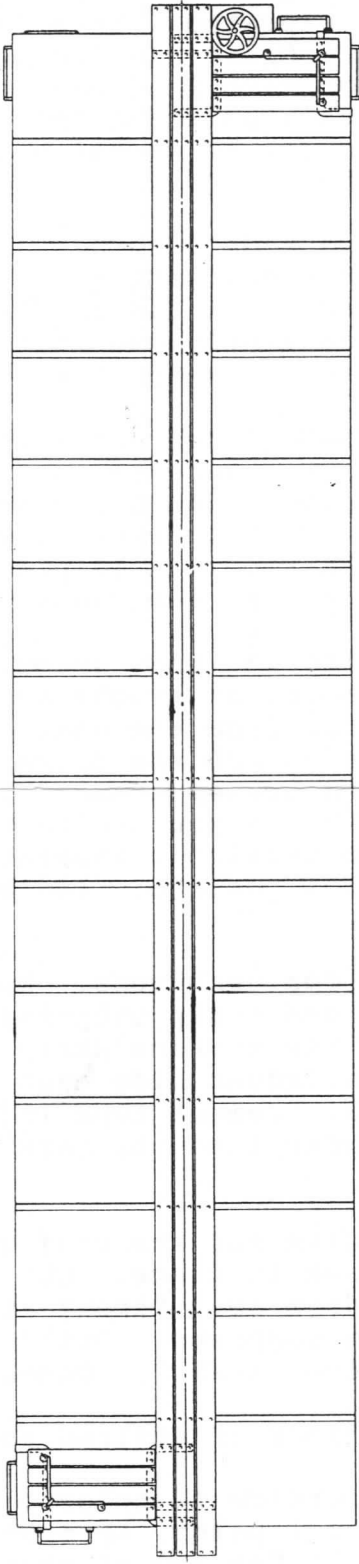
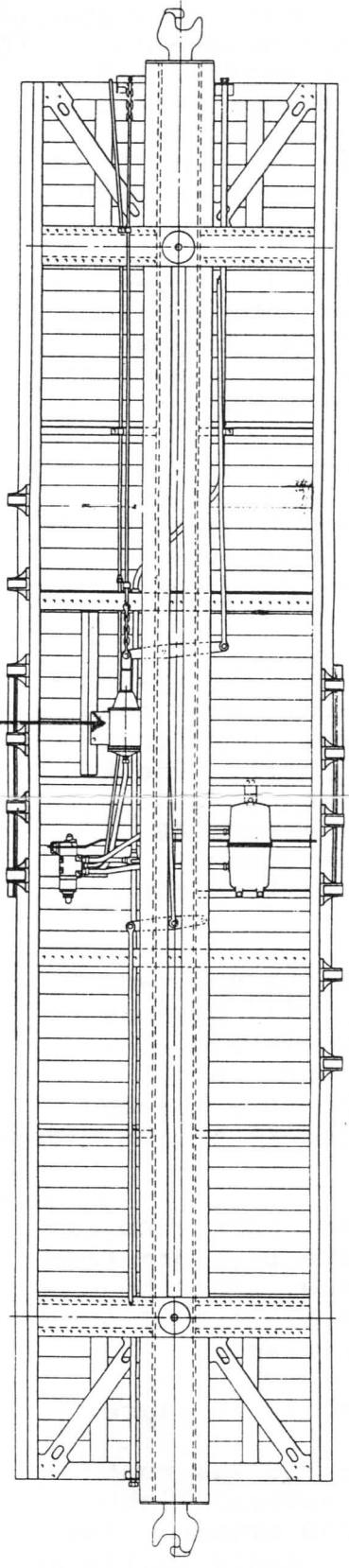
Step 4: Drill #76 the body for grabirons. Note that the end ladder is built up from grabirons and strip material. This will be done as follows: Drill and cut the styrene strip as shown in Fig. 2. Drill Matching holes in the ladder side cast on the end. Bend grabirons as shown in Fig.3. Cement them in place to form the end ladders. Some railroads modernized the cars with ladders on the sides instead of grabirons.

Step 5: Drill #76 the endwalks for the roof grabirons. Form them as shown in Fig. 4. Cement them in place. Cut the brake platform from the sheet if you have not done so. Cement it in place. Add the roofwalk and brake platform supports. Drill #76 the brakewheel and cement it to a length of wire "staff". Cement it in place.

Step 6: Add weight to the floor if desired and cement it in place.

Step 7: Paint the car your choice of colors. Boxcar red was most typical. We recommend Floquil paint, sprayed on in several light coats. Another alternative is the use of spray can red primer. The color is right and the product is readily available. Apply decals or dry transfers of your choice. Attach the trucks and couplers and weather the car to taste.

Booke cylinder



PROBING
PAGE 100

Fig 1

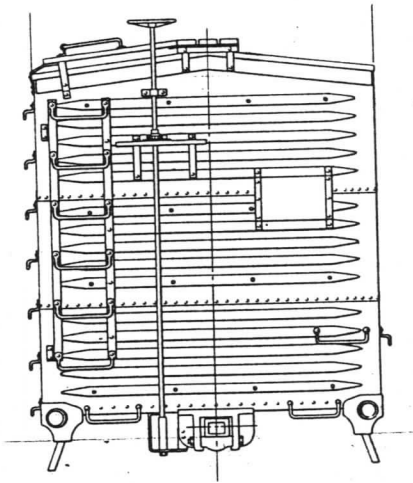
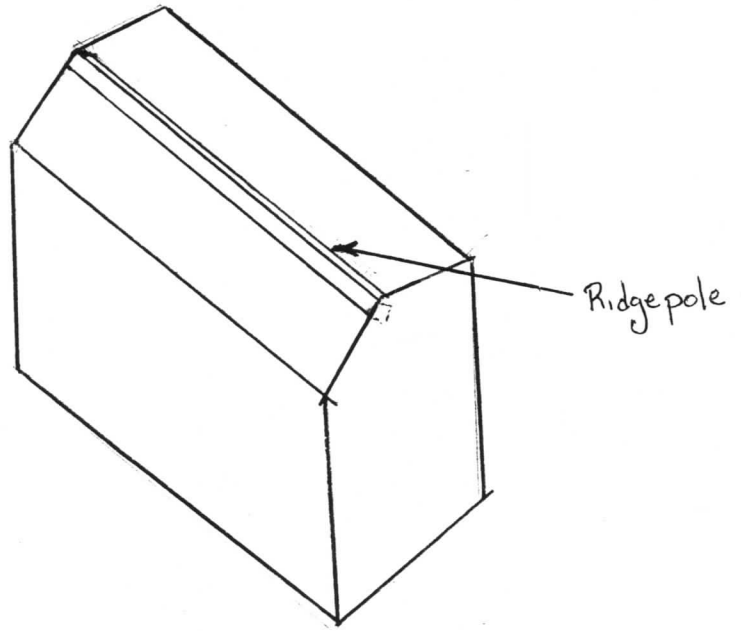
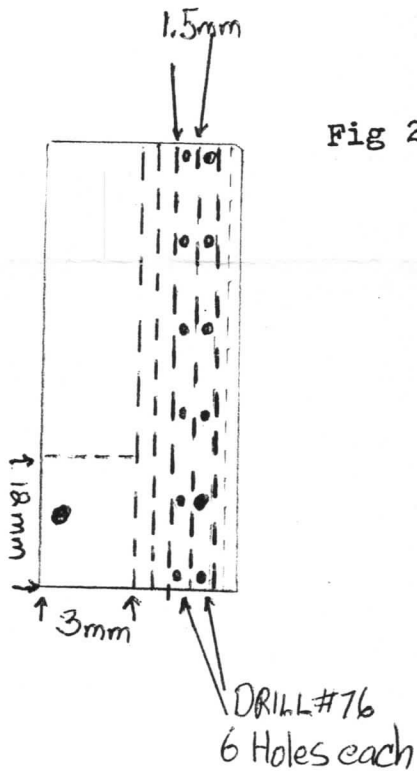


Fig 2



Cut on dotted lines

Fig 3

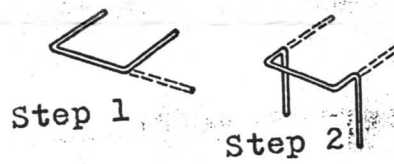


Fig. 4

