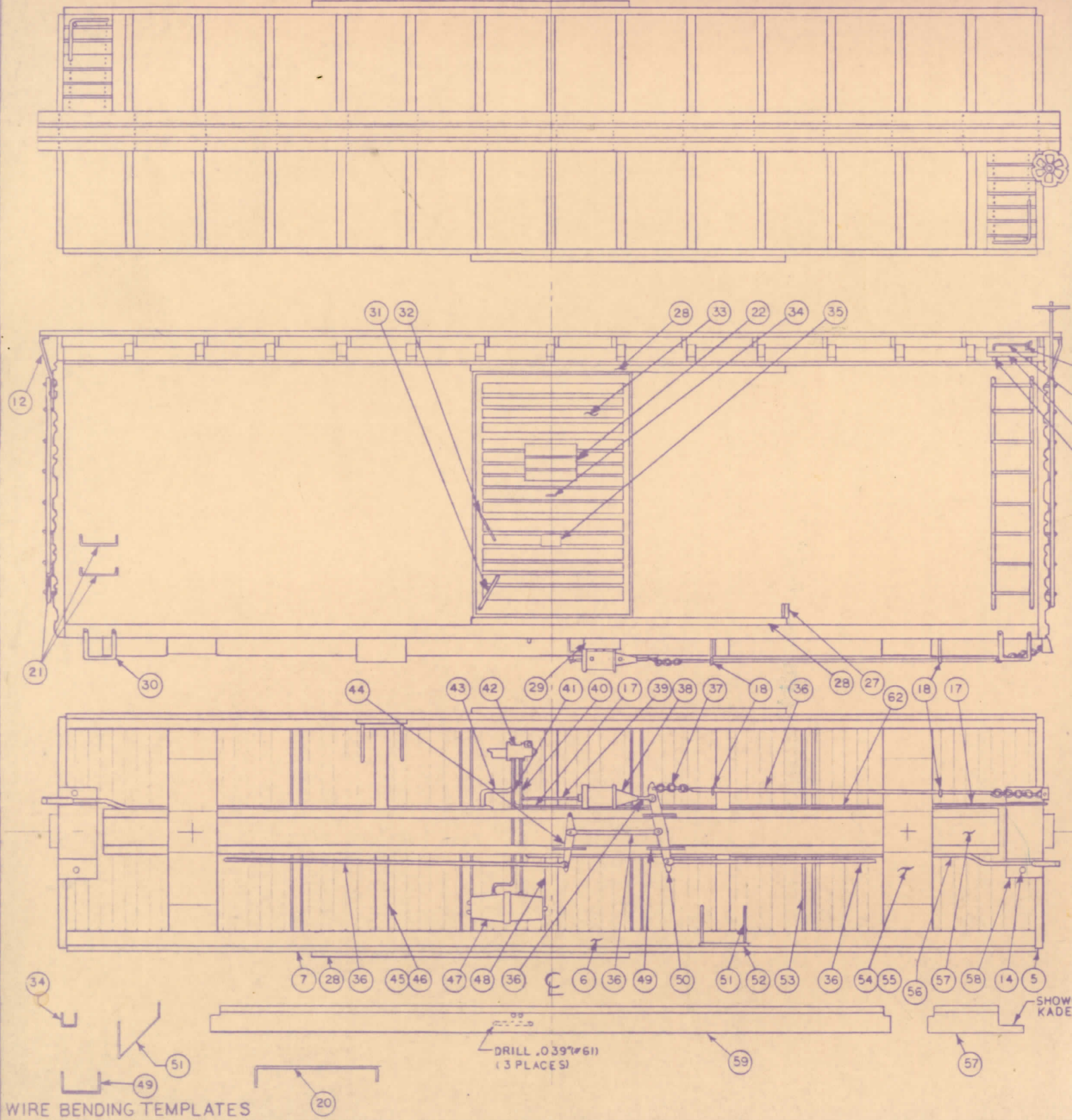


# CONSTRUCTION

SAND AND SEAL: CENTERSILL 59, 3/32" CHANNEL 53, 3/64" ANGLE 28 & 27, CROSS-BEARER PLATE 45, CAP 46 & CROSSBEARER 48. CHECK THAT LENGTH OF ROOF 1, FLOOR 2, & SUBSIDES 6 ARE EQUAL, ALSO THAT THE END BLOCKS 4 ARE THE SAME HEIGHT, ADD FILLER PIECES 3 TO NOTCHES IN FLOOR, SANDING TO FIT AFTER GLUE IS DRY. SCRIBE FLOOR FOR 6" BOARDS (3/32"). ADD END BLOCKS 4, DRILL & MOUNT BOLSTERS 54, CENTERSILL 59 & CROSSBEARER PLATES 45. ADD CHANNELS 53, CROSSBEARERS 48 AND CROSSBEARER & BOLSTER CAPS 46 & 55, ADD END SHIMS 63. ROOF 1 & SUBSIDES 6, FILE & SAND BACK OF ENDS 5 FLAT. REMOVE FLASH AND MOUNT, CLEAN FLASH FROM OTHER CASTINGS & DRILL. OPEN BRAKE STAFF BKT ON "B" COUPLER POCKET 58 & ADD COUPLERS (NOT SUPPLIED). CUT CENTERSILL EXTENSIONS 57 TO FIT COUPLERS & MOUNT. RUN TRAINLINE 56 & ADD COUPLER POCKETS 58. MOUNT BRAKE CYLINDER SUPPORT 29, BRAKE CYLINDER 38,

TRIPLE VALVE 42 & RESERVOIR 47, ADD AIR LINES 62, 39, 43, 40 & 41 (SEE D 44 & 50 WITH HANGERS 49. ATTACH BRAKE RODS 36 WITH PIVOT PINS 60. MOUNT BRAKE WHEEL 11 ON BRAKE STAFF 61 & ATTACH USING EYE PIN 18 & POCKET 58, STRINGING LAST LINK OF CHAIN ON STAFF. ADD ROOF RIB WALK 10, END SUPPORTS & PINS 12 & 14. MOUNT ENDWALKS WITH SUPPLY & CORNER POSTS 24 & 23, FABRICATE RETAINER VALVE ASS'Y 13 (SEE DE RETAINER LINE 17 & EYE PINS 18, MOUNT LADDERS 19 ON ENDS ALONG W & CUT LEVERS 20. NOTCH BRAKE PLATFORM 16 TO CLEAR BRAKE STAFF PINS 14, ADD DECK 15. MOUNT PLACARDS 52 WITH SUPPORTS 51, SAND D DOORGUIDES 28. ADD TACK BOARDS 22, DOOR LATCHES 31 & 32. HANDLE TO LENGTH. PAINT CAR, PRE-PAINT DOOR ASS'YS, SIDE LADDERS 19, STEP EDGES OF SIDES. ATTACH SIDES, PRE-PAINTED PARTS & SIDE GRABIRON. MOUNT BETTENDORF TRUCKS (NOT SUPPLIED).



WIRE BENDING TEMPLATES

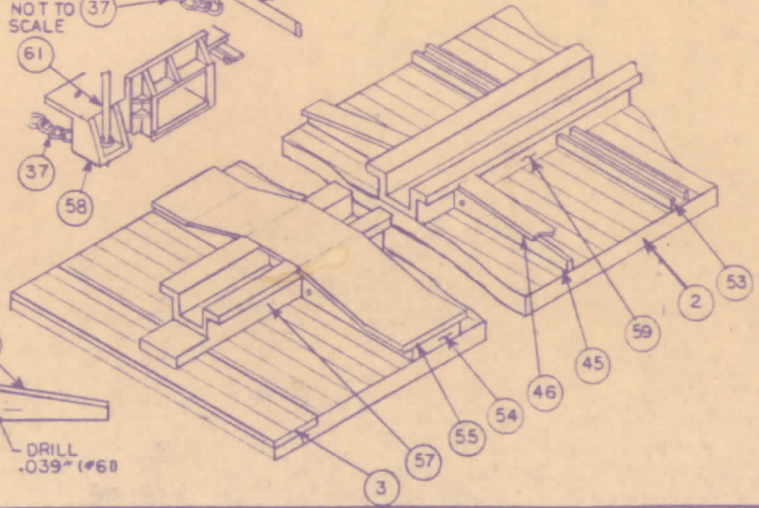
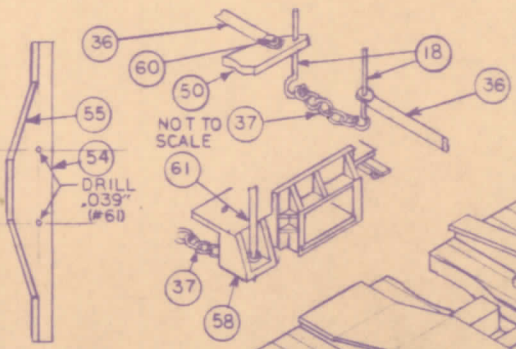
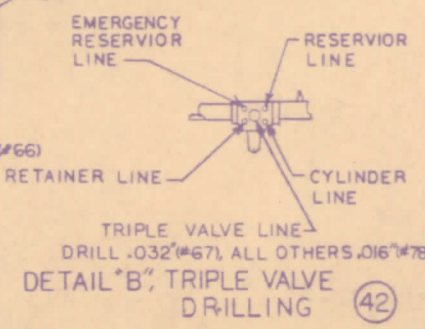
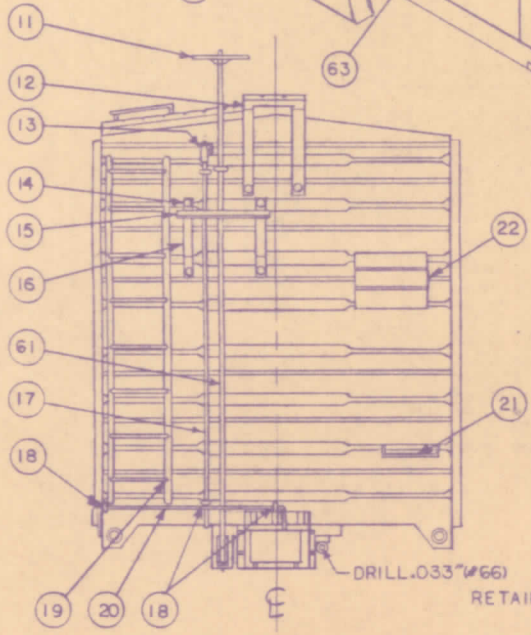
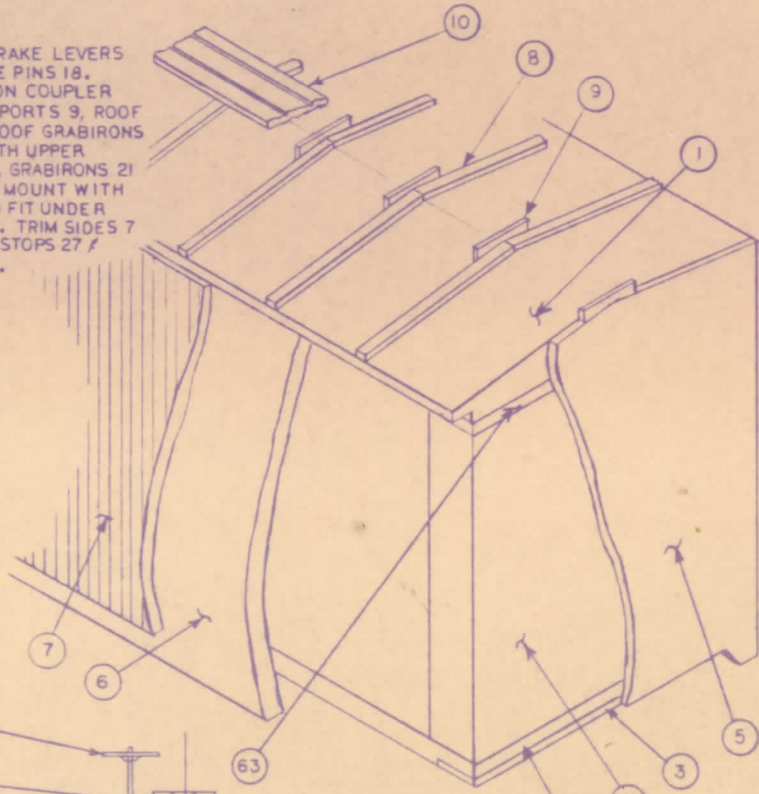
5"

PAINT: FOR ENTIRE CAR; MIXTURE OF EQUAL PARTS OF FLOQUIL TUSCAN & BOXCAR RED.

ADHESIVES

WOOD TO WOOD: WHITE OR YELLOW GLUE (EHLMERS)  
 WOOD TO METAL (OR PLASTIC): CEMENT (AMBRID/ DUCCO)  
 METAL TO METAL: ACC (EASTMAN 910 / HOT STUFF)

SEE DETAIL "B", MOUNT BRAKE LEVERS  
 60 & CHAIN 37 WITH EYE PINS 18.  
 18 & HOLE IN BRACKET ON COUPLER  
 OF RIBS, ROOFWALK SUPPORTS 9, ROOF  
 SUPPORTS 25 & 26. ADD ROOF GRABIRONS  
 SEE DETAIL "A" & MOUNT WITH UPPER  
 RIBS WITH TACKBOARDS 22, GRABIRONS 21  
 & STAFF & RETAINER LINE & MOUNT WITH  
 END DOORS 33. THINNER TO FIT UNDER  
 HANDLES 34 & PLATES 35. TRIM SIDES 7  
 & STEPS 30, DOORGUIDES 28, STOPS 27 &  
 GRABIRONS 21. TOUCH UP PAINT.



63	2	END SHIM, 1/16" x 3/16" x 1-17/32" LG. LIGHT GREEN
62	1	RETAINER VALVE LINE, LOWER, WIRE 1/64"
61	1	BRAKE STAFF, WIRE 1/32" x 2-23/32" LG.
60	6	BRAKE ROD PIVOT PIN, WIRE 1/64"
59	1	CENTERSILL, 5-1/4" LG.
58	2	COUPLER POCKET
57	2	CENTERSILL EXTENSION
56	-	TRAINLINE, WIRE 1/32" CUT TO SUIT
55	2	BOLSTER CAP, 1/32" x 3/8" x 1-9/16" LG., BLUE
54	2	BOLSTER
53	8	CHANNEL, 3/32" x 5/8" LG., BLUE
52	2	PLACARD, 1/32" x 3/16" x 3/8" LG., BLUE
51	4	PLACARD SUPPORT, WIRE 1/64"
50	1	BRAKE LEVER, LARGE, 1/32" x 3/8" x 11/16" LG., BLUE
49	3	BRAKE HANGER, WIRE 1/64"
48	2	CROSSBEARER, 1/32" x 3/32" x 5/8" LG., BLUE
47	1	AIR RESERVOIR
46	4	CROSSBEARER CAP, 1/32" x 3/32" x 19/32" LG., BLUE
45	4	CROSSBEARER PLATE 1/16" x 3/8" x 5/8" LG., RED
44	1	BRAKE LEVER, SMALL, 1/32" x 3/8" x 1/2" LG., BLUE
43	1	TRIPLE VALVE LINE, WIRE 1/32"
42	1	TRIPLE VALVE
41	1	EMERGENCY RESERVOIR LINE, WIRE 1/64"
40	1	RESERVOIR LINE WIRE 1/64"
39	1	BRAKE CYLINDER LINE, WIRE 1/64"
38	1	BRAKE CYLINDER
37	2	CHAIN, 3/8" LG.
36	-	BRAKE ROD, WIRE 1/32" - CUT TO SUIT
35	2	DOOR PLATE, 1/32" x 3/32" x 5/32" LG. BLUE
34	2	DOOR HANDLE, WIRE 1/64"
33	2	DOOR
32	2	DOOR LATCH, UPPER, WIRE 1/64"
31	2	DOOR LATCH, LOWER, WIRE 1/32"
30	4	STEP
29	1	BRAKE CYLINDER SUPPORT, 5/32" x 3/16" x 5/16" LG.
28	4	DOORGUIDE, 3/64" ANGLE x 2-7/16" LG. YELLOW
27	2	DOORSTOP, 3/64" ANGLE x 1/8" LG. YELLOW
26	4	ENDWALK SUPPORT, 1/32" SQ. x 3/4" LG., RED
25	2	ENDWALK
24	2	ROOF GRABIRON, WIRE, 1/64"
23	2	CORNER POST, WIRE, 1/64"
22	4	TACKBOARD, 1/16" SCRIBED x 1/32" THK
21	6	GRABIRON
20	2	UNCOUPLING (CUT) LEVER, WIRE 1/64"
19	4	LADDER
18	12	EYE PIN
17	1	RETAINER VALVE LINE, UPPER, WIRE, 1/64"
16	1	BRAKE PLATFORM
15	1	BRAKE PLATFORM DECK, 1/16" SCRIBED x 1/32" THK
14	12	PIN, 1/2" LG.
13	1	BRAKE RETAINER VALVE ASSY, SEE DETAIL "A"
12	2	ROOFWALK END SUPPORT
11	1	BRAKEWHEEL
10	1	ROOFWALK, 7-7/8"
9	15	ROOFWALK SUPPORT, 1/16" x 1/32" LT. GN.
8	26	ROOF RIB, 1/16" x 1/32" x 31/32", LT. GN.
7	2	SIDE GN.
6	2	SUBSIDE, 7-1/2" x 2-1/16" x 3/32"
5	2	END, IMPROVED DREADNOUGHT
4	2	END BLOCK x 1-11/16"
3	2	FILLER PIECE, 1/4" SCRIBED x 1/16" THK, SAND TO FIT
2	1	FREIGHT FLOOR x 7-1/2" W/NOTCHES
1	1	OVERHANGING ROOF x 7-1/2"

ITEM QTY	DESCRIPTION
<b>HOQUAT HOBBIES</b>	
RO. BOX 253	DUNELLEN, N.J. 08812
TITLE:	GREAT NORTHERN, DOUBLE SHEATHED, STEEL ENDED, BOX CAR
DRAWN BY:	Kent L. Dinger
DATE:	JULY, 1984
SCALE:	3/16" = 1'
NO.	HH-2