

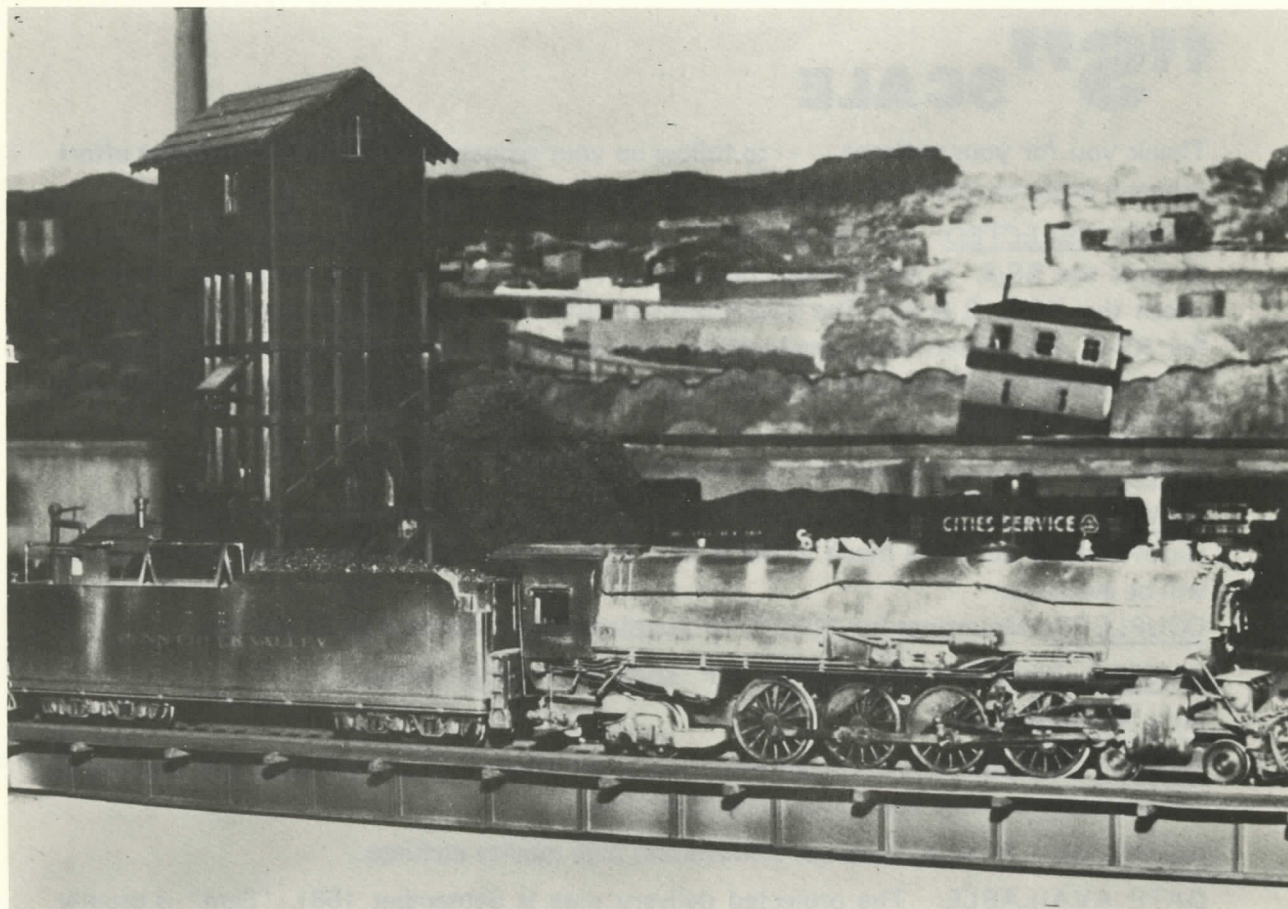
# DISPATCH

To web

VOLUME FOUR NO 2

NASG NEWSLETTER

APRIL 1981



THIS EXCELLENT S-GAUGE 4-8-2 WAS BUILT BY SAM POWELL  
(PHOTO BY GEOFF GRAEBER)

## IMPORTANT NOTICES:

1. Gene Fletcher's new address is:  
Eugene Fletcher  
RFD-5, Adams Rd.  
Brunswick, ME 04011  
All membership renewals should be sent to him at this address. NASG membership is still only \$5.00 per year. Make checks payable to "NASG, Inc."
2. There are still some convention cars available. They can be purchased by sending the completed form which is attached along with the appropriate fee to Walt Danylak.
3. Please try to contact those members mentioned in the President's Report who have delinquent dues. It is imperative that we keep everyone's membership current if we are to keep growing!!
4. We need artists for the Booster Club!! To be specific, we need someone to revise and update the artwork on the Booster Club page so that we can start running it again with the next issue.  
Booster Club memberships will be lengthened so that the lost time will be regained.

**ALCO**

# Actionline

**April 20th 1981**

## "S" SCALE

Thank you for your patience - - - to follow up your request for information, a major effort is herein made to answer all your questions.

MODEL SELECTED: At first the RS-2 was proposed, but many suggestions were directed towards the RS-3. It was an easy change because, as you know, many parts interchange between the RS-2, 3 & 4/5. The RSD 4/5 is scheduled for production about six months after the RS-3. The diesels being produced by Samhonga for ALCO will be presented in an orderly manner to provide you with fairly-priced and highly-detailed models of lasting value that you can afford.

ALCO "S": All models will be fully assembled and ready to operate.

POWER: A quality Japanese "can" motor (DC) will power enclosed cast gear boxes via above-floor drive shafts much in the same manner as our HO models. Extra power chassis will be available.

COUPLERS: Mountings for MKD-5/10 couplers will be standard on all models.

WHEELS: Wheel-sets will be of the "RP" style, or prototype shape.

MIN. RADIUS: 24"

FINISH: A "satin finish" coated with a clear overspray for lasting beauty will also act as a super under-coat for your favorite paint scheme.

DETAILING: As usual, castings, coinings and high quality etchings.

DATE AVAILABLE: The projected delivery date is September 1981. "Sam" is usually accurate with scheduling.

DEALERS: All of the present ALCO Models Dealers and some new "S" scale suppliers will be able to fill your orders. Since we rely on dealers and support them, we will refrain from any direct sales. There will always be a dealer near you, if you don't already have your favorite. If you need a dealer, we can provide the names of the three nearest you, according to your zip code. Since only 100 of any model will be produced, your dealer may require a deposit, depending on his relationship with you. We will require dealers to confirm their orders to us with a \$30.00 deposit.

As we venture into providing fine brass scale models for you, please remember that fine scale models is our business. We will continue to provide models for you - - - with your support we'll succeed, and we realize it's a two-way street.

Bruce W. Giles & Charles D. Santoro  
ALCO MODELS

P. S. If we missed any important points, please let us know.

#### REGISTRATION

The registration fee is \$25.00 if mailed on or before June 15, 1981. June 16, 1981 and after, the fee will be \$30.00. The fee includes you and your family plus all the tours for YOU only. We are sorry, but due to the high cost of transportation, we cannot include your family on the tours at this price. The first 150 who register will receive a special surprise never before offered at a NASG Convention, or at any convention that we recall.

#### HOTEL RESERVATIONS

Reserve your room early using the enclosed form. We have a block of 100 rooms reserved but only until June 26, 1981. To ensure yourself of a room, make your reservation before June 26, 1981.

#### TRANSPORTATION

Syracuse is easily accessible by car, bus, train and plane. If you are driving, see the map and directions on the reverse side. If you are using public transportation, and let us know on your registration form, we will arrange to meet you.

#### BANQUET

A full course Prime Rib dinner. A separate meal will be available for children 12 and under.

#### TOURS

Tours will begin Thursday, July 16, 1981 at 1:00 PM and continue through Saturday afternoon. The tentative schedule is: Thursday - Arbour Models and the SU Dome; Friday - Allied Chemical's railroad, the NRHS's passenger car collection and the CNYSGA's club layout; Saturday - Conrail's DeWitt yard.

#### LADIES PROGRAM

A complete program of activities and tours specifically designed for the ladies. Tours will include factory outlet stores, shopping centers and local attractions.

#### CONTEST AND DISPLAY MODELS

Anyone who enters a model in the model contest (you must be a NASG member to enter) OR brings a model to display, will receive a \$1.00 cash refund.

#### CONVENTION CAR

We are offering a factory made American Flyer box car. See the enclosed flyer for complete details. We DO NOT anticipate that there will be any cars for sale at the Convention.

#### CONVENTION PATCH

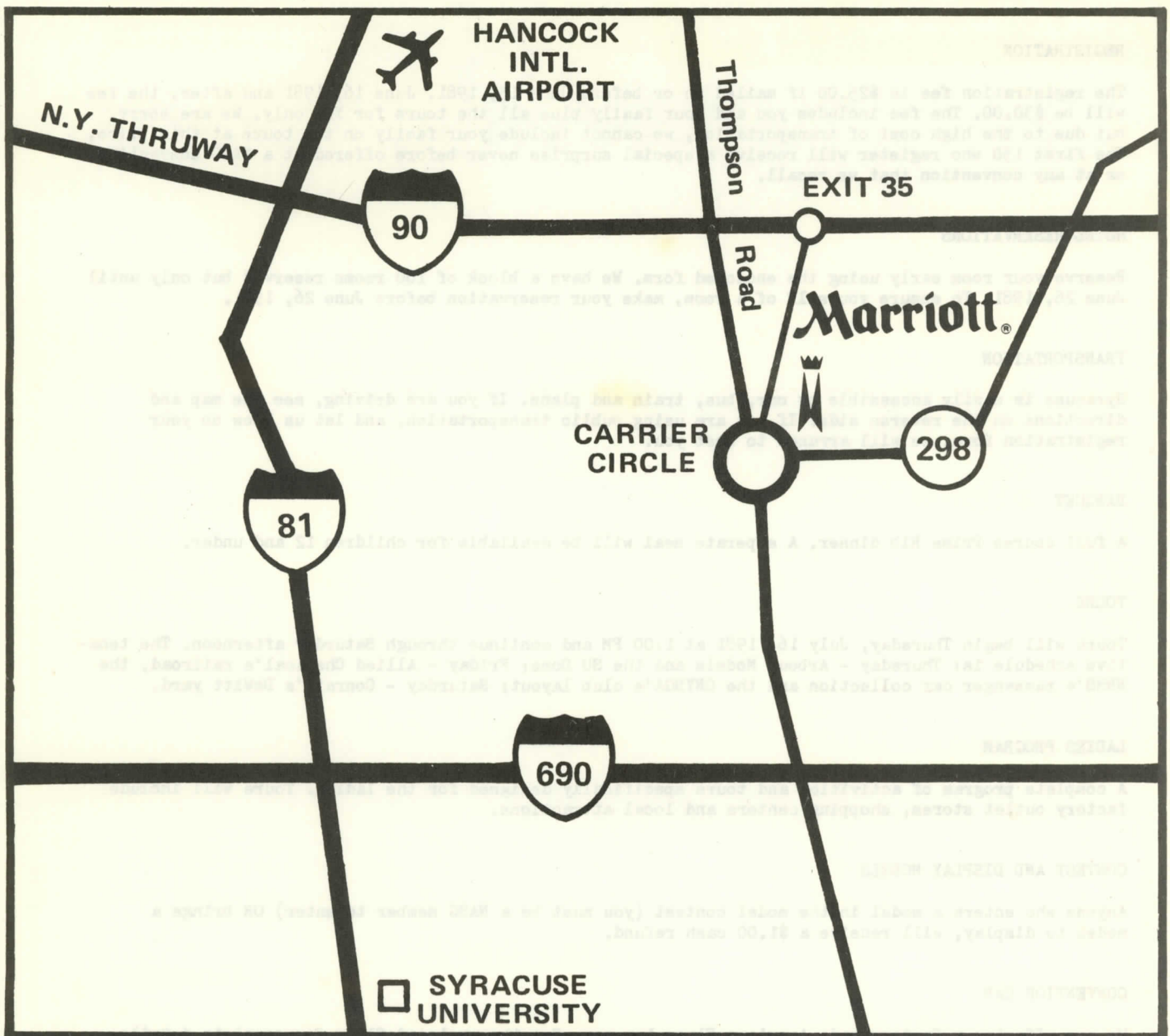
A large, beautiful three color patch of our Convention Logo.

#### FLEA MARKET TABLES

A limited number of tables will be available. Please reserve only the tables you really need.

#### PICNIC

If enough people are interested, we will have a four hour, all you can eat and drink picnic on Sunday afternoon, July 19, 1981 from 12 Noon until 4:00 PM. The menu will include: barbecued chicken, hot dogs, Italian sausage, hamburgers, corn on the cob, salt potatoes, relishes, rolls, breads, soda and beer. Cost will be approximately \$20.00 per person. If you are interested in attending the picnic, indicate so on your registration form. DO NOT send any money for the picnic now. If enough people are interested, tickets will be available at the Convention.



**DIRECTIONS**

- From The North - I-81 South to the NYS Thruway (I-190); NYS Thruway (I-190) East to Exit 35; Go around Carrier Circle (3/4 around) to Route 298 East; Route 298 East 1/2 mile to Marriott Drive on left.
- From The South - I-81 North to I-690 East; I-690 East to Exit 10 North (Thompson Road); Thompson Road North to Carrier Circle; Route 298 East 1/2 mile to Marriott Drive on the left.
- From The East & West - NYS Thruway (I-190) to Exit 35; Go around Carrier Circle (3/4 around ) to Route 298 East; Route 298 East 1/2 mile to Marriott Drive on the left.

# American Flyer®

## S GAUGE



In conjunction with the 1981 National Association S Gaugers (NASG) Convention, the Central New York S Gauge Association, Inc., host for the Convention, is pleased to announce that arrangements have been confirmed with Fundimensions, manufacturer of Lionel and American Flyer, to produce a special American Flyer S gauge box car for the Convention.

To our knowledge, this will be the first factory made American Flyer S gauge convention car ever produced.

The car will be orange with black and white markings and feature sliding doors, die cast trucks with knuckle couplers and be in an American Flyer box.

The car will be presold, as most organizations do with their convention cars, and be distributed at the NASG Convention in Syracuse this coming July. For those unable to attend, the car will be shipped to them in late July, after the convention has concluded. Total production will be limited to 2000 cars.

You DO NOT have to be a member of the NASG to order the car. You can order as many cars as you want. All orders must include full payment and a stamped, self-addressed envelope. With the envelope we will either confirm your order or return your check if the cars are sold out.

----- USE THIS FORM OR FACSIMILE -----

Quantity		Rate	Extension
_____	NASG Convention Car	\$22.00	_____
	If not attending convention add \$2.00 shipping per car.	\$2.00	_____
	New York residents add \$1.54 sales tax per car	\$1.54	_____
	Total Enclosed		_____

Makes checks payable to - CENTRAL NEW YORK S GAUGE ASSOCIATION, INC.

Name \_\_\_\_\_

Address \_\_\_\_\_

City \_\_\_\_\_ State \_\_\_\_\_ Zip \_\_\_\_\_

Mail to - WALT DANYLAK, 115 UPLAND ROAD, SYRACUSE, NY 13207

## PRESIDENT'S REPORT

Dick Cataldi - March 29, 1981

While much of this issue of the Dispatch is devoted to our upcoming convention in Syracuse, it is time to mention another important meet: the NMRA national convention in San Mateo, California on August 18-23, 1981.

Pacific Region Vice President Ed Loizeaux has gotten himself into the position of S-Gauge Chairman at San Mateo. He will coordinate all "S" activities and displays for those who wish to participate with other S gaugers in cooperative efforts. Individuals or manufacturers desiring to set up their own displays should make arrangements through the appropriate NMRA personnel. For those unable to travel to San Mateo, however, or for those wishing to participate in one large comprehensive "S" exhibit, Ed should be contacted and used as a focal point to insure sufficient space and availability of experienced S gaugers to answer questions and watch over the exhibits.

A large modular scale layout will be in operation, the S exhibit will be manned, and an "S scalers only" picnic will be held at Ed's house. Several S gauge layouts will be available for visits. This sounds like a great way to end the summer for Californians and those who can arrange to be in San Mateo in late August. More detailed information is available from:  
Ed Loizeaux  
15611 Kavin Lane  
Monte Sereno  
California 95030

One of the best ways to promote S is for S gaugers to belong to NMRA and to attend their conventions when it is practical to do so. Our presence at these meets gets us out of the closet and into the mainstream of the hobby.

### Election Report: H E L P !

The ballots were mailed to our members who live outside of the United States on March 28. Ballots are to be mailed to U.S. members starting on April 4 or very soon after that. If you have received this newsletter and are a regular member or honorary member, you should have received your ballot. If not, write to  
Committee Chairman  
1314 Forest Hill Drive  
Mobile, Alabama 36618

Do it today!

Our slam-bang mailing labels program has been on the fritz lately, as you probably noticed with hand-addressed newsletters and ballots. We are on the way to correcting this problem but need some help, especially for this election. There are nine members whose February issues of the Dispatch were returned to us by the Postal Service. We must track these folks down to get their ballots to them as well as to get newsletters to them. These members are: Ron Bashista, James V. Caimano, George R. Casselberry, Roy Hoffman, Andrew Jugle, Peter J. Jugle, Alfred H. Ries, Thomas E. White, and Louis H. Wollin.

Each of these fellows is known by several of you. If it's a local call, get in touch with the guy(s) you know and tell him(them) to drop

a card to Robert E. Moore. Otherwise, help us out and write the address on a card yourself and send it in. Please don't assume that someone else will do this. Ron and Jim and George and the rest of them would probably like to get a few dozen calls anyway. Rod Moore's mailbox is big enough to take some postcards. Thanx.

## NEWS FROM THE SURVEY SQUAD

By Steve Butler

Hello again, dear readers, and welcome to another exciting installment of: "Survey results", brought to you this month by those folks on the Hi-Rail Committee. Yes, we at the survey squad have sampled and studied this select sect of "S" and distilled some surprising statistics. (A special prize waits for you if you can say that last sentence five times without making a mistake!). While it has always been difficult to define a Hi-Railer, 21 people from this minority group sent in their surveys and 17 of them are willing to share their knowledge with others. Their names and addresses have been forwarded to Sig Fleischmann and the Hi-Rail Committee, who will, I assume, contact them soon. Just for the sake of information, I define a Hi-Railer as someone who models in S Gauge, and uses American Flyer or other commercial Hi-Rail wheelsets. This allows the use of AF "open frog" turnouts (scale wheel flanges will not work well in these, they derail frequently).

So enough for the preliminaries. Here are the results!: NASG Survey #5: "The Hi-Rail Survey". The results are expressed in percentages. Some totals are greater than 100% because respondents checked more than one answer.

1. Which of the following phrases best describes you?
  - A. Active Hi-Railer: 42%
  - B. Inactive Hi-Railer: 8%
  - C. Tinplate operator planning to change to Hi-Rail operation: 17%
  - D. S-Gauger willing to promote Hi-Rail modeling: 29%
2. Which best describes your layout?
  - A. Test track: 21%
  - B. Loop type: 68%
  - C. Point to point: 11%
3. What size is your layout (Average)
  - A. Area = 216 square feet
  - B. Length of mainline track = 134 ft.
4. What types of rail and ties do you use? (Check all that apply)
  - A. AF: 55%
  - B. Gargraves: 55%
  - C. Code 172 Rail: 25%
  - D. Code 125 Rail: 25%
  - E. Other: 0
  - F. Hand-laid ties: 20%
  - G. Miller tie strips: 15%
  - H. Other types - one person - Ace tie strip
5. What types of wheels do you use?
  - A. AF: 80%
  - B. Commercial Hi-Rail: 55%
  - C. Other: Ace scale - 15%

6. What type of couplers do you use?
  - A. AF link: 35%
  - B. AF knuckle: 80%
  - C. Kadee: 1) HO Gauge: 25%  
2) O Gauge: 25%
7. How do you uncouple your equipment?
  - A. AF uncoupling ramps: 55%
  - B. Kadee uncoupling ramp: 25%
  - C. Manually: 40%
8. Which best describes your mode of operation?
  - A. Operate trains "to watch them run": 60%
  - B. Car card operation: 25%
  - C. Waybill operation with timetable: 5%
  - D. "I have my own system": 10%
9. Would you like to share your modeling ideas with other Hi-Railers?  
YES: 85%

S-GAUGE REPRESENTATION AT THE  
NMRA NATIONAL CONVENTION - 1981  
San Mateo, CA (near San Francisco)  
AUGUST 18 - 23, 1981

The NMRA National Convention has selected Ed Loizeaux to act as "S Gauge Chairman" for the 1981 convention. Ed will coordinate all "S" activities and displays for those who wish to participate with other "S" gaugers in joint cooperative efforts. Individuals or manufacturers desiring to set up their own displays should make arrangements through the appropriate NMRA personnel. For those unable to travel to San Mateo, however, or for those wishing to participate in one large comprehensive "S" exhibit, Ed should be contacted and used as a focal point to insure sufficient space and availability of experienced S gaugers to answer questions and watch exhibit items.

A large modular scale layout will be in operation and the S exhibit will be presented. An "S scalers only" picnic will be held at Ed's house, and several S layouts will be open for tours. More detailed information is available from:

Ed Loizeaux  
15611 Kavin Lane  
Monte Sereno, CA 95030

This is the first, last, and only announcement of this nature. NASG participation is hereby solicited, but individual letters to various NASG committees cannot be written due to lack of time. Send display materials, including brochures, to Ed with instructions for return of material. Send money to cover cost of return postage.

S CLUB NEWS - EXCERPTS FROM THE VARIOUS NEWSLETTERS  
RECEIVED BY THE NASG DISPATCH

BRISTOL S-GAUGE RAILROADERS  
MINUTES OF MEETING OF FEBRUARY 9, 1981

The business meeting was called to a semblance of order at approximately 3:30 PM by president Paul Riley. Secretary/Treasurer Tom Coughlan read the minutes of the last meeting and gave the financial report. Model contest chairman Bruce Russell handed out printed rules for the 1981 model contest and members were urged to participate this year as all entries would be transported to Syracuse for entry in the NASG contest. A show of hands indicated that the Bristol Club will be well represented at this "local" convention as several members have tentative plans to attend.

In another vote, the club has decided to give serious consideration to hosting an upcoming NASG National Convention in our own backyard. More discussion and a further definition of time, place, and delegation of duties will be main topics of discussion at upcoming meetings. The Radison Ferncroft motel in Danvers, MA was suggested as a potential site for our convention.

It was also pointed out that the recent NASG conventions have welcomed display models (past contest winners, etc.) and since some of us will be driving to Syracuse, it will be possible to transport several representative samples of members talents to this convention. Members were urged to consider this as an opportunity to show our peers the Bristol Club approach to S gauge modeling.

All members were urged to purchase the Syracuse "convention" car to be produced by Lionel. It was stressed that this would be both a help to the convention committee and also a wise investment.

Ron Koch brought samples of the relatively new publication of the AF collectors group. He stated as an offshoot of the TCA group has now established itself on solid ground and urged all interested in this phase of S gauge railroading to give this organization serious consideration. At least two members indicated intent to sign up immediately. The samples of this group's quarterly publication were favorably viewed by all.

The business meeting was ended at 4:30 PM at which time most members drifted back down to the Berkshire Central. This time we viewed several locomotive and train combinations of our host in various phases of operation. This railroad is a constant reminder and inspiration to all of what can be done with the "limited" resources available to S gaugers.

- Reported by  
Paul V Riley, President

DELAWARE VALLEY S GAUGERS

The February meeting of the Delaware Valley S Gaugers was held on the 15th at Frank Titman's place with 100% attendance with the exception of a hospitalized member. One prospect, Art Tucker, also attended the meeting. Plans were made for the March 1st Spring Thaw Train Meet to be held in Allentown where the club will put on a static display of S and Sn3 equipment. They also entertain hopes of finding some new members.

Most of the day was spent looking over the progress and operating Frank's growing Spiral Hill Railroad. Lou Rennig's LVM Reading Consolidation locomotive was kept in operation to wear in the running gear. Plenty of table space was provided for those who wished to work on their various models. However, a good bit of the time was spent on the floor where each member hoped to find a missing hand rail that was dropped accidentally. To this day, wherever it went is still a mystery!

Each member has been working diligently on his secret project for the big April meeting which will be a regular mini-convention. The New York S Gaugers, Hershey S Gaugers, and the New Jersey group will all attend that meeting with their secret projects. It promises to be very exciting. We will keep you informed of this forthcoming event.

- Frank Titman  
DVSJG Secretary

CENTRAL NEW YORK S GAUGERS

ELECTIONS

Our January meeting saw the election of a slate of Officers and Directors for the Corporation. Re-elected were:

- President: Charles A. Brown
- Secretary: John Steinbach
- Treasurer: Jack Creiman

Rolf Faste, citing his expanding commitments at the University, reluctantly concluded that he could not continue as Vice President, given our hectic days ahead. We are certainly grateful for his contributions to the club, and we hope he will continue his involvement, nevertheless. To replace him in the position of Vice President, elected was "R.C." Rardin.

Re-elected as Directors were Charlie Brown, John Steinbach, Jack Creiman and as Director-at-Large, Charlie Stackpoole. "R.C." joins the ranks as a Director as well.

Those of us re-elected thank the members for their votes of confidence. Your continued support is of course critical to the successes we are striving for in the months ahead. You may be assured of our vigorous efforts!

By universal acclaim, also re-elected was our S Gauge Sage, Tom Canne, to the job of Historian. Walt Danylak continues in the awesome task of Convention Chairman.

- John Steinbach, Secretary

SOUTHEASTERN MICHIGAN S GAUGERS  
MINUTES OF THE JANUARY 18, 1981 MEETING

The January of the SMSG, composed of nine members and one guest, was called to order by the president. The first item discussed was the modular layout proposed at the December meeting and the club's responsibility to finance and construct the corner units. Sig Fleischmann estimated the construction cost of all four corner sections to run between \$125.00 and \$150.00 including lumber, track and scenery.

A vote was taken and the members elected to have the SMSG build and pay for the corner modules. Gaylord Gill said it would be possible to use his basement for construction and storage. Sig Fleischmann will design the structure for the end modules. We would like to hear from the balance of the membership, either at the February meeting, by phone, or by letter as to their participation in this project. We would also like opinions on what size rail to use, i.e. to promote highrail, scale, or a combination of usage in S gauge; also whether a contributing membership or other means of financing the corner modules should be adopted.

A motion was made and carried to raise the annual dues from \$2.00 per year to \$5.00 per year starting January 1, 1981. The vote was unanimous to raise the dues.

Nominations were made and a vote taken to elect a new president. Sig Fleischmann was elected to a second term. Congratulations, Sig.

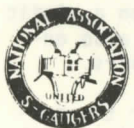
It was suggested that the secretary-treasurer submit information regarding club activities to the NCR "Hotbox" and the NASG "Dispatch" in addition to the club column in the "S Gaugian". Information has been submitted to the "S Gaugian" for several months and will be sent to the "Hotbox" and "Dispatch" beginning with this report. Also a post card giving SMSG club statistics has been sent to the "Model Railroader" in response to the "At the Throttle" request for club news and directory in the February issue.

Thomas Hawley presented another NMRA tape clinic which explained prototype train operation. The program then showed methods to adopt the prototype system to a model railroad operation. Tom also showed many of his own slides of both prototype and model railroads. Thanks, Tom, for your fine presentation.

- David O. Held, Secretary

10

SUPPORT NASG!!  
PURCHASE A CONVENTION CAR TODAY!!



DISPATCH

GEOFF GRAEBER, EDITOR  
1412 WINDING WAYE LANE  
SILVER SPRING, MD. 20902

